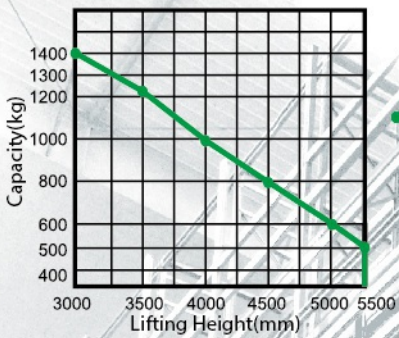


CQDH14-850 Scissor Stacker

Load Curve



Configuration and performance

- Electronic power steering system, light and low noise.
- Two-way magnetic valve, three drop speed mode. AC Driving system, No carbon brush, maintenance free.
- Electromagnetic, regenerative braking system. Lifting, reach, regenerative limit, motor and battery life extension.
- Equipped with double oil cylinder, fork tilt more smoothly.
- Standard moon walk. Handle at any angle, the vehicle goes straight.

Safety

- Curve automatic deceleration devices, more safe.
- Stepless speed control system, safe and quiet.
- Controller with Multiple automatic protection.
- Emergency reversing device/Emergency brake switch.
- High position automatic reduction device.



AC | EPS | Moon Walk

Down mode at 3 speeds

Type	Lift height (mm)	Outside width between forks (mm)	Inside width between forks (mm)
CQDH14-850	3500/3800/4000/4200/4500/5000/5500	1270/1420/1470	1070/1220/1270

Feature		
Model		CQDH14-850
Type		Reach(Tilt,Side shifter)
Mast type		Standard 3-Stage
Load capacity	kg	1400
Load center	mm	500
Wheel base	mm	1478
Operating type		Walkie
Wheels		
Wheels type		PU
Wheel quantity Driving wheel/ Balance wheel/Bearing wheel		1/0/4
Dimension		
Reach distance	mm	0-550
Standard lift height	mm	3500/3800/4000/4500/5000/5500
Max.extend height	mm	4710/5010/5210/5710/6210/6720
Mast lowered height	mm	1914/2014/2081/2248/2415/2582
Lowered fork height	mm	55
Fork size(length/width/thickness)	mm	1070/100/40
Overall length	mm	2225
Overall width	mm	1430
Outside width between forks	mm	200-812
Distance shift fork side	mm	150
Tilt of fork(F/B)	mm	4/3
Min.Turning radius		1566
Min.Aisle width for pallets 800×1200	km/h	2135
Min.Aisle width for pallets 1000×1200	mm/s	2315
Min.ground clearance	mm/s	30
Performance		
Travel speed,laden/unladed		3.5/4
Lift speed,laden/unladed	kW	130/150
Lowering speed,laden/unladed	V	100/180
Gradeability,laden/unladed	Ah	3/5
Electrical configuration		
Drive motor/Lift motor/Steering motor		AC1.5/DC4.5/DC0.15
Battery voltage		24
Battery capacity	kg	345 (Options:FAAM345)
Brake	kg	Electromagnetic/Regenerative
Controller		ZAPI
Weight		
Battery weight		298
Service weight with battery		2296

* Details of specifications and equipment are based on information available at time of printing and may change without notice.

