

## CQDH15R

### Electric Reach Truck

#### AC / EPS

#### Magnetic Valve Control



No foot pedal & guard



Option: Double scissor forks



Frei Tiller Head  
Standard Frei Tiller Head

#### Characteristics

##### Structure

- The truck has compact structure and the platform is optional.
- Low gravity ensures safety operation.
- Water proof and dust proof motor structure keeps the braking and motor more durable and reliable.
- Multi function display with BDI, hour meter and fault code is adopted.
- Vertical driving wheel ensures convenient maintenance and small turning radius.
- The mast and frame are dividable and exchangeable.

##### Safety and Efficiency

- Advanced AC drive motor eliminates replacement of carbon brush and has good ramp starting performance.
- The Germany Frei handle is adopted to control driving speed, lifting/lowering speed, sideshift, fork reach and tilting.
- Cylinder have safety explosion proof valve which avoids fork dropping suddenly when oil tube is broken and thus ensures the safety of operator.
- The truck has the automatic speed deceleration when lifting height is up 1.8M.
- Mast with micro switch limit the cylinder lifting height which avoids mast shock problems.
- Low voltage protection setting prolongs the battery life.
- Option EPS power steering system makes steering more light and reliable.

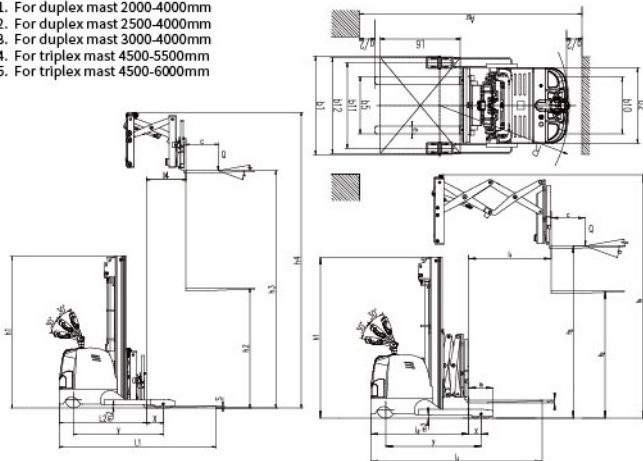




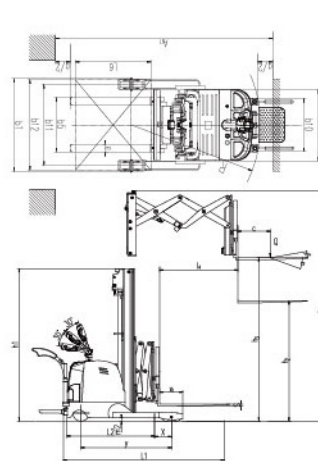
## Manufacturer's Data and Technical Characteristics

Characteristics		HELI					
		CQDH15R					
		Single scissor with platform(multi-valve)	Single scissor with platform(magnetic valve)	Single scissor without platform(magnetic valve)	Double scissors with platform(magnetic valve)	Double scissors without platform(magnetic valve)	
1.01	Manufacturer	HELI					
1.02	Model	CQDH15R					
1.03	Load capacity	1500	1500	1500	1000	1000	
1.04	Load centre distance	500	500	500	500	500	
1.05	Front overhang,centre of load wheel axle to fork	287(double mast) /315(triple mast)	287(double mast) /315(triple mast)	269(double mast) /248(triple mast)	150	150	
1.06	Driving mode	Stand-up rider (Optional electric steering)	Stand-up rider (Optional electric steering)	Walking style(Optional electric power steering)	Stand-up rider (Optional electric steering)	Walking style(Optional electric power steering)	
1.07	Wheel base	1319/1354	1319/1354	1319/1354	1319/1354	1319/1354	
Tyre		Polyurethane					
2.01	Tyre type	Polyurethane					
2.02	Wheels,number front rear(x=driven wheels)	1x+2/4	1x+2/4	1x+2/4	1x+2/4	1x+2/4	
2.03	Tyre size,front	φ250x80+150x62	φ250x80+150x62	φ250x80	φ250x80+150x62x2	φ250x80+150x62x2	
2.04	Tyre size,rear	φ125x82x4	φ125x82x4	φ125x82x2	φ125x82x4	φ125x82x4	
2.05	Tread front	b10	715	715	715	715	
2.06	Tread rear	b11	1074/1154	1074/1154	1074/1154	1074/1154	
Dimension							
3.01	Lift height	h3	2500/3000/3500/ 4000/4500/5000/5500	2500/3000/3500/ 4000/4500/5000/5500	2000/2500/3000/3500/ 4000/4500/5000/5500/6000	3000/3500/4000/ 4500/5000/5500	3000/3500/4000/ 4500/5000/5500
3.02	Height, mast extended	h4	3381/3881/4381/ 4881/5381/5881/6381	3381/3881/4381/ 4881/5381/5881/6381	2881/3381/3881/4381/ 4881/5381/5881/6381/6881	4035/4535/5035/ 5535/6035/6535	4035/4535/5035/ 5535/6035/6535
3.03	Height, mast lowered	h1	1869/2119/2369/ 2619/2179/2341/2499	1869/2119/2369/ 2619/2179/2341/2499	1619/1869/2119/2369/ 2619/2179/2341/2499/2669	2125/2375/2625/ 2185/2345/2505	2125/2375/2625/ 2185/2345/2505
3.04	Free lift	h2	- /1575/1700/1825	- /1575/1700/1825	1575/1700/1825/2000	1575/1700/1825	1575/1700/1825
3.05	Fork dimensions,thickness/width/length	s/e/l	35/100/1070	35/100/1070	35/100/1050	35/100/1070	35/100/1070
3.06	Forks, tilt forward/back	°	2/5	2/5	2/5	2/5	2/5
3.07	Overall length	l1	2364/2364/2364/ 2364/2384/2384/2384	2364/2364/2364/ 2364/2384/2384/2384	2389 <sup>1</sup> /2430 <sup>5</sup>	2635 <sup>3</sup> / 2655 <sup>4</sup>	2535 <sup>3</sup> /2555 <sup>4</sup>
3.08	Length to shank of forks(fork excluded)	l2	1388 <sup>2</sup> / 1427 <sup>4</sup>	1388 <sup>2</sup> / 1427 <sup>4</sup>	1319 <sup>1</sup> /1360 <sup>5</sup>	1565 <sup>3</sup> / 1585 <sup>4</sup>	1465 <sup>3</sup> /1485 <sup>4</sup>
3.09	Overall width	b1/b2	1200-1300/950	1220 <sup>2</sup> 1300 <sup>4</sup> /950	1220 <sup>1</sup> 1300 <sup>5</sup> /950	1232/950	1232/950
3.10	Reach distance	l4	500	500	500	1200	1200
3.11	Aisle width with pallet 1000Lx1200W	Ast	2834 <sup>2</sup> /2867 <sup>4</sup>	2834 <sup>2</sup> /2867 <sup>4</sup>	2733 <sup>1</sup> /2770 <sup>5</sup>	2960 <sup>3</sup> /2983 <sup>4</sup>	2860 <sup>3</sup> /2883 <sup>4</sup>
3.12	Aisle width with pallet 1200Lx800W	Ast	2904 <sup>2</sup> /2940 <sup>4</sup>	2904 <sup>2</sup> /2940 <sup>4</sup>	2800 <sup>1</sup> /2840 <sup>5</sup>	3040 <sup>3</sup> /3063 <sup>4</sup>	2940 <sup>3</sup> /2963 <sup>4</sup>
3.13	Minimum turning radius	R	1692 <sup>2</sup> /1710 <sup>4</sup>	1692 <sup>2</sup> /1710 <sup>4</sup>	1588 <sup>1</sup> /1608 <sup>5</sup>	1743 <sup>3</sup> /1763 <sup>4</sup>	1643 <sup>3</sup> /1663 <sup>4</sup>
Performance							
4.01	Travel speed,laden/unladen	Km/h	4.8/5	4.8/5	4.8/5	4.8/5	4.8/5
4.02	Lift speed,laden/unladen	m/s	0.095/0.12	0.095/0.12	0.095/0.12	0.095/0.12	0.095/0.12
4.03	Lowering speed,laden/unladen	m/s	0.2/0.15	0.2/0.15	0.2/0.15	0.2/0.15	0.2/0.15
4.04	Gradeability,laden/unladen	%	5/12	5/12	5/12	5/12	5/12
Electrical configuration							
5.01	Drive moter power	kw	1.5 AC/2.2 AC	1.5 AC/2.2 AC	2.2 AC	1.5 AC/2.2 AC	1.5 AC/2.2 AC
5.02	Lifting moter power	kw	3.3 (4.5)	3.3 (4.5)	4.5	3.3 (4.5)	3.3 (4.5)
5.03	Battery voltage,nominal capacity (5-hour discharge)	V/Ah	24/320(460)	24/320(460)	24/320(460)	24/320	24/320
5.04	Battery dimensions l/w/h	mm	812x270x575	812x270x575	812x270x535 /812x270x575	812x270x535	812x270x535
5.05	Brake		Electromagnetic brake	Electromagnetic brake	Electromagnetic brake	Electromagnetic brake	Electromagnetic brake
Weight							
6.01	Total weight(with battery)	kg	2250/2300/2350/ 2350/2500/2550/2600	2250/2300/2350/ 2350/2500/2550/2600	2250/2250/ 2300/2350/2350	2330/2380/2380/ 2530/2580/2630	2330/2380/2380
6.02	Battery weight	kg	285(360)	285(360)	285(360)	285	285

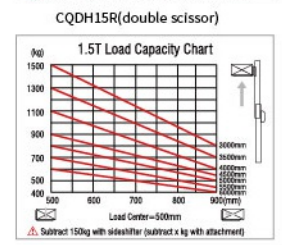
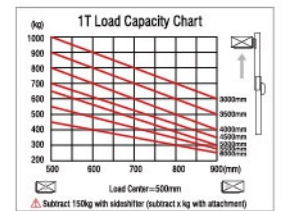
1. For duplex mast 2000-4000mm
2. For duplex mast 2500-4000mm
3. For duplex mast 3000-4000mm
4. For triplex mast 4500-5500mm
5. For triplex mast 4500-6000mm



CQDH15R without platform



CQDH15R with platform



CQDH15R(double scissor)