

## CQDH20R

### Electric Reach Truck

#### AC / EPS

#### Magnetic Valve Control



No foot pedal & guard



Option: Double scissors forks



Frei Tiller Head  
Standard Frei Tiller Head

#### Characteristics

##### Structure

- The truck has compact structure and the platform is optional.
- Low gravity ensures safety operation.
- Water proof and dust proof motor structure keeps the braking and motor more durable and reliable.
- Multi function display with BDI, hour meter and fault code is adopted.
- Vertical driving wheel ensures convenient maintenance and small turning radius.
- The mast and frame are dividable and exchangeable.

##### Safety and Efficiency

- Advanced AC drive motor eliminates replacement of carbon brush and has good ramp starting performance.
- The Germany Frei handle is adopted to control driving speed, lifting/lowering speed, sideshift, fork reach and tilting.
- Cylinder have safety explosion proof valve which avoids fork dropping suddenly when oil tube is broken and thus ensures the safety of operator.
- The truck has the automatic speed deceleration when lifting height is up 1.8M.
- Mast with micro switch limit the cylinder lifting height which avoids mast shock problems.
- Low voltage protection setting prolongs the battery life.
- Option EPS power steering system makes steering more light and reliable.

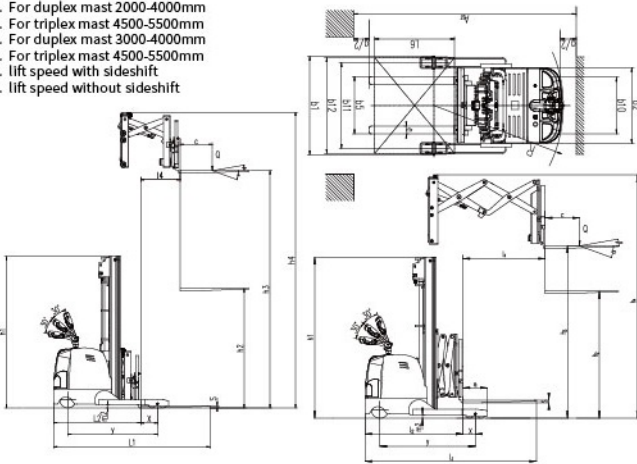




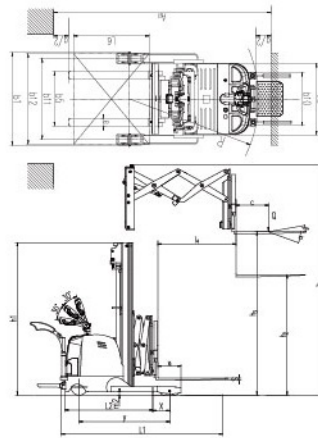
## Manufacturer's Data and Technical Characteristics

Characteristics		HELI				
		CQDH20R				
		Single scissor with platform	Single scissor without platform	Double scissors with platform	Double scissors without platform	
1.01	Manufacturer	HELI				
1.02	Model	CQDH20R				
1.03	Load capacity	Q kg	2000	2000	1000	1000
1.04	Load centre distance	C mm	500	500	500	500
1.05	Front overhang, centre of load wheel axle to fork	X mm	265(double mast) /262(triple mast)	265(double mast) /262(triple mast)	182(double mast) /178(triple mast)	182(double mast) /178(triple mast)
1.06	Driving mode		Stand-up rider (Electric steering)	Stand-up rider (Optional electric steering)	Walking style/Optional electric power steering	Stand-up rider (Optional electric steering)
1.07	Wheel base	Y mm	1462/1481	1462/1481	1462/1481	1462/1481
Tyre		Polyurethane				
2.01	Tyre type		Polyurethane			
2.02	Wheels, number front rear(x=driven wheels)		1x+2/4	1x+2/4	1x+2/4	1x+2/4
2.03	Tyre size, front	mm	φ250x80+150x62	φ250x80	φ250x80+150x62x2	φ250x80+150x62x2
2.04	Tyre size, rear	mm	φ125x82x4	φ125x82x2	φ125x82x4	φ125x82x4
2.05	Tread front	b10 mm	710	710	710	710
2.06	Tread rear	b11 mm	1120	1120	1120	1120
Dimension						
3.01	Lift height	h3 mm	2500/3000/3500/ 4000/4500/5000/5500	2000/2500/3000/3500/ 4000/4500/5000/5500	3000/3500/4000/4500/5000/5500	
3.02	Height, mast extended	h4 mm	3397/3897/4397/ 4897/5397/5897/6397	2897/3397/3897/4397/ 4897/5397/5897/6397	4035/4535/5035/5535/6035/6535	
3.03	Height, mast lowered	h1 mm	1875/2125/2375/ 2625/2185/2345/2505	1625/1875/2125/2375/ 2625/2185/2345/2505	2125/2375/2625/2185/2345/2505	
3.04	Free lift	h2 mm	~ / ~ / ~ / ~ / ~ ~ / 1575 / 1700 / 1825	~ / ~ / ~ / ~ / ~ 1575 / 1700 / 1825	~ / ~ / ~ / ~ / ~ ~ / 1575 / 1700 / 1825	
3.05	Fork dimensions, thickness/width/length	s/e/l mm	40/100/1070	40/100/1050	40/100/1070	40/100/1070
3.06	Forks, tilt forward/back	°	2/5	2/5	2/5	2/5
3.07	Overall length	l1 mm	2550 <sup>1</sup> /2574 <sup>2</sup>	2450 <sup>1</sup> /2474 <sup>2</sup>	2535 <sup>3</sup> /2557 <sup>4</sup>	2535 <sup>3</sup> /2557 <sup>4</sup>
3.08	Length to shank of forks (fork excluded)	l2 mm	1480 <sup>1</sup> /1504 <sup>2</sup>	1380 <sup>1</sup> /1404 <sup>2</sup>	1393 <sup>3</sup> /1417 <sup>4</sup>	1393 <sup>3</sup> /1417 <sup>4</sup>
3.09	Overall width	b1/b2 mm	1200-1300/950	1220-1300/950	1232/950	1232/950
3.10	Reach distance	l4 mm	500	500	1200	1200
3.11	Aisle width with pallet 1000Lx1200W	Ast mm	2928 <sup>1</sup> /2950 <sup>2</sup>	2828 <sup>1</sup> /2850 <sup>2</sup>	2990 <sup>3</sup> /3016 <sup>4</sup>	2890 <sup>3</sup> /2916 <sup>4</sup>
3.12	Aisle width with pallet 800Lx1200W	Ast mm	2996 <sup>1</sup> /3019 <sup>2</sup>	2896 <sup>1</sup> /2919 <sup>2</sup>	3072 <sup>3</sup> /3096 <sup>4</sup>	2972 <sup>3</sup> /2996 <sup>4</sup>
3.13	Minimum turning radius	R mm	1779 <sup>1</sup> /1799 <sup>2</sup>	1679 <sup>1</sup> /1699 <sup>2</sup>	1779 <sup>3</sup> /1799 <sup>4</sup>	1679 <sup>3</sup> /1699 <sup>4</sup>
Performance						
4.01	Travel speed, laden/unladen	Km/h	4.8/5	4.8/5	4.8/5	4.8/5
4.02	Lift speed, laden/unladen	m/s	Without sideshift 0.08/0.095/0.12	Without sideshift 0.08/0.095/0.12	0.1/0.17	0.1/0.17
4.03	Lowering speed, laden/unladen	m/s	0.2/0.15	0.2/0.15	0.2/0.13	0.2/0.13
4.04	Gradeability, laden/unladen	%	5/12	5/12	5/12	5/12
Electrical configuration						
5.01	Drive motor power	kw	2.2 AC	2.2 AC	2.2 AC	2.2 AC
5.02	Lifting motor power	kw	4.5	4.5	4.5	4.5
5.03	Battery voltage, nominal capacity (5-hour discharge)	V/Ah	24/490(525)	24/490(525)	24/490	24/490
5.04	Battery dimensions l/w/h	mm	774x332x580	774x332x580 /776x334x580	774x332x580	774x332x580
5.05	Brake		Electromagnetic brake	Electromagnetic brake	Electromagnetic brake	Electromagnetic brake
Weight						
6.01	Total weight (with battery)	kg	2450/2500/2550/ 2550/2700/2750/2800	2250/2300/2350/ 2350/2500/2550/2600	2530/2580/2580/2730/2780/2830	2530/2580/2580/2730/2780/2830
6.02	Battery weight	kg	380	380	380	380

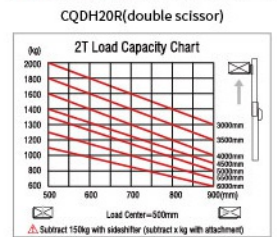
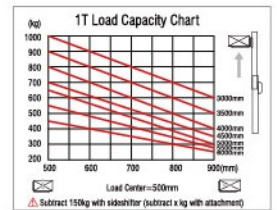
1. For duplex mast 2000-4000mm
2. For triplex mast 4500-5500mm
3. For duplex mast 3000-4000mm
4. For triplex mast 4500-5500mm
5. lift speed with sideshift
6. lift speed without sideshift



CQDH20R without platform



CQDH20R with platform



CQDH20R (single scissor)