

RX 70 Technical Data LPG Forklift Truck

RX 70-16

RX 70-18

RX 70-20





RX 70-16/20 LPG Forklift Truck

Manoeuvrable and economical

This specification sheet, which conforms to VDI guideline 2198, provides the technical values for the standard equipment only. Different tyres, other masts, the use of accessories etc. may result in other values.

	No.	Description	Unit	STILL				
				RX 70-16	RX 70-18	RX 70-20		
Distinguishing features	1.1	Manufacturer						
	1.2	Manufacturer's type designation						
	1.2.1	Type number		7314	7315	7316		
	1.3	Drive		LPG	LPG	LPG		
	1.4	Operation		Seated	Seated	Seated		
	1.5	Nominal load capacity/load	Q	kg	1600	1800	2000	
	1.6	Load centre distance	c	mm	500	500	500	
	1.8	Load distance	x	mm	395	395	405	
	1.9	Wheel base	y	mm	1450	1487	1526	
Weights	2.1	Service weight		kg	2706	2856	3059	
	2.2	Axle load, laden	front/rear	kg	3817/489	4149/507	4568/491	
	2.3	Axle load, unladen	front/rear	kg	1230/1476	1266/1590	1382/1677	
	3.1	Tyres			Superelastic	Superelastic	Superelastic	
	3.2	Tyre size	front	mm	18 x 7-8	18 x 7-8	200/50-10	
	3.2	Tyre size	rear	mm	18 x 7-8	18 x 7-8	18 x 7-8	
Basic dimensions	3.5	Number of wheels (x = driven)	front/rear		2x/2	2x/2	2x/2	
	3.6	Track width	front/rear	b ₁₀ /b ₁₁	mm	932/895	932/895	942/895
	4.1	Tilt of mast/fork carriage	forward/backward	α/β	°	3/8	3/8	3/8
	4.2	Height of mast when retracted		h ₁	mm	2160	2160	2160
	4.3	Free lift		h ₂	mm	150	150	150
	4.4	Lift		h ₃	mm	3230	3230	3150
	4.5	Height of mast when extended		h ₄	mm	3873	3873	3725
	4.7	Height above protective roof (cab)		h ₆	mm	2117	2117	2117
	4.8	Seat height in terms of SIP		h ₇	mm	1015	1015	1015
	4.12	Coupling height		h ₁₀	mm	474	474	474
	4.19	Overall length		l ₁	mm	2975	3012	3061
	4.20	Length including fork backs		l ₂	mm	2175	2212	2261
	4.21	Overall width		b ₁	mm	1099	1099	1138
	4.22	Fork dimensions		s/e/l	mm	40/80/800	40/80/800	40/80/800
	4.23	Fork carriage ISO 2328, class/form A, B				Cl. II, form A	Cl. II, form A	Cl. II, form A
	4.24	Fork carriage width		b ₃	mm	980	980	980
	4.31	Ground clearance under mast		m ₁	mm	90	90	90
	4.32	Ground clearance, centre of wheel base		m ₂	mm	133	133	133
	4.34.1	Working aisle width with pallet 1000 x 1200 crossways		A _{st}	mm	3523	3557	3603
	4.34.2	Working aisle width with pallet 800 x 1200 lengthways		A _{st}	mm	3727	3762	3810
	4.35	Turning radius		W _a	mm	1926	1961	1998
4.36	Smallest pivoting distance		b ₁₃	mm	538	544	550	
Performance data	5.1	Travel speed	laden/unladen	km/h	22/22	22/22	22/22	
	5.2	Lifting speed	laden/unladen	m/s	0.52/0.54	0.52/0.54	0.52/0.54	
	5.3	Lowering speed	laden/unladen	m/s	0.59/0.59	0.59/0.59	0.59/0.59	
	5.5	Drawbar pull	laden/unladen	N	13200/6700	13200/6700	13200/6700	
	5.7	Gradeability	laden/unladen	%	27/28	26/28	26/28	
	5.9	Acceleration time	laden/unladen	s	4.9/4.6	5.0/4.7	5.1/4.7	
IC engine	5.10	Service brake			Mechanical/hydraulic	Mechanical/hydraulic	Mechanical/hydraulic	
	7.1	Engine manufacturer			Linde MH	Linde MH	Linde MH	
	7.1.1	Type			BEF S1	BEF S1	BEF S1	
	7.2	Engine performance in accordance with ISO 1585		kW	30	30	30	
	7.3	Nominal speed		1/min	2350	2350	2350	
	7.4	Number of cylinders			4	4	4	
	7.4.1	Capacity		cm ³	2000	2000	2000	
	7.5	Fuel consumption according to VDI cycle		kg/h	2,2	2,3	2,4	
	7.9	On-board voltage	U	V	12	12	12	
	8.1	Type of drive unit			Diesel-electric	Diesel-electric	Diesel-electric	
Miscellaneous	10.1	Operating pressure for accessory equipment		bar	230	230	230	
	10.2	Oil volume for accessory equipment		l/min	30	30	30	
	10.4	Fuel tank capacity		kg	11	11	11	
	10.7	Sound pressure level ¹ L _{paZ} (operator's position)		dB(A)	<74	<74	<74	
	10.7.1	Sound power level LWAZ (working cycles)		dB(A)	<99	<99	<99	
		Human vibrations ² : acceleration according to EN 13059		m/s ²	0.71	0.71	0.71	
	10.8	Trailer coupling, item/DIN type			Bolt	Bolt	Bolt	

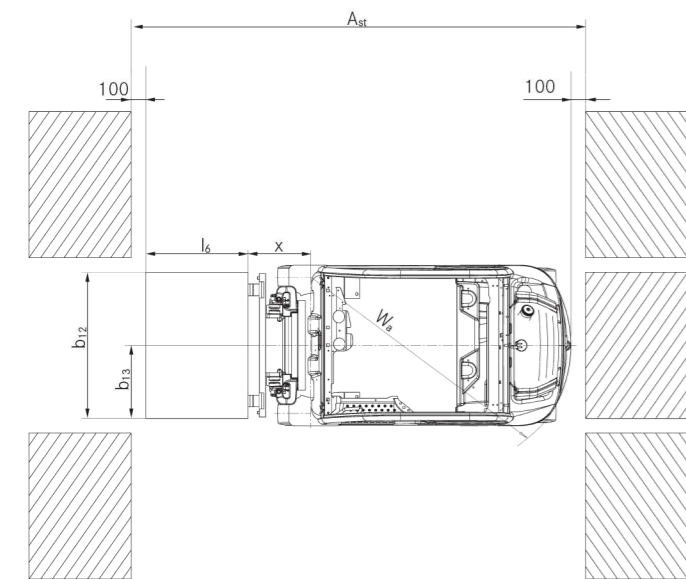
¹ With cab; different values without cab

² With standard driver's seat

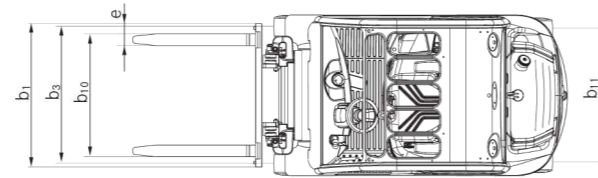


				Telescopic mast							HiLo mast				Triplex mast						
				mm	mm	mm	mm	mm	mm	mm	mm	mm	mm	mm	mm	mm	mm	mm	mm	mm	mm
RX 70-16	Nominal lift	h_3	mm	3030	3230	3530	3930	4230	4730	5430	3175	3375	3575	3975	4320	4920	5220	5620	6070	6820	7870
	Overall height	h_1	mm	2060	2160	2310	2510	2660	2910	3260	2060	2160	2260	2460	2060	2160	2260	2460	2610	2860	3210
	Free lift	h_2	mm	150	150	150	150	150	150	150	1462	1562	1662	1862	1462	1562	1662	1862	2012	2262	2612
	Maximum height	h_4	mm	3673	3873	4173	4573	4873	5373	6073	3793	3993	4193	4593	5238	5538	5838	6238	6688	7438	8488
	Tilt of mast/fork carriage	forward/backward	α/β	°	3/8							3/6				3/6					
	Fork lock-in position centre-centre			mm	216/368/445/521/673/760							216/368/445/521/673/760				216/368/445/521/673/760					
	Tyres	front/rear			18 x 7-8 / 18 x 7-8 // 200/50-10 / 18 x 7-8						100/50-10 / 18 x 7-8				18 x 7-8 / 18 x 7-8 // 200/50-10 / 18 x 7-8						
	Track	front/rear	b_{10}/b_{11}	mm	932/895					990/895		932/895			932/895			990/895			
Maximum width		b_1	mm	1099					1188		1099			1099			1188				
RX 70-18	Nominal lift	h_3	mm	3030	3230	3530	3930	4230	4730	5430	3060	3260	3460	3860	4470	4770	5070	5470	5920	6670	7720
	Overall height	h_1	mm	2060	2160	2310	2510	2660	2910	3260	2060	2160	2260	2460	2060	2160	2260	2460	2610	2860	3210
	Free lift	h_2	mm	150	150	150	150	150	150	150	1412	1512	1612	1812	1412	1512	1612	1812	1962	2212	2562
	Maximum height	h_4	mm	3673	3873	4173	4573	4873	5373	6073	3743	3943	4143	4543	5138	5438	5738	6138	6588	7338	8388
	Tilt of mast/fork carriage	forward/backward	α/β	°	3/8							3/6				3/6					
	Fork lock-in position centre-centre			mm	216/368/445/521/673/760							216/368/445/521/673/760				216/368/445/521/673/760					
	Tyres	front/rear			18 x 7-8 / 18 x 7-8 // 200/50-10 / 18 x 7-8						200/50-10 / 18 x 7-8				18 x 7-8 / 18 x 7-8 // 200/50-10 / 18 x 7-8						
	Track	front/rear	b_{10}/b_{11}	mm	932/895					990/895		932/895			932/895			990/895			
Maximum width		b_1	mm	1099					1188		1099			1099			1188				
RX 70-20	Nominal lift	h_3	mm	3030	3230	3530	3930	4230	4730	5430	3070	3270	3470	4045	4465	4765	5065	5665	6115	6865	7915
	Overall height	h_1	mm	2060	2160	2310	2510	2660	2910	3260	2060	2160	2260	2460	2060	2160	2260	2460	2610	2860	3210
	Free lift	h_2	mm	150	150	150	150	150	150	150	1505	1605	1705	1905	1505	1605	1705	1905	2055	2305	2655
	Maximum height	h_4	mm	3525	3725	4025	4425	4725	5225	5925	3645	3845	4045	4445	5055	5355	5655	6255	6705	7455	8505
	Tilt of mast/fork carriage	forward/backward	α/β	°	3/8							3/6				3/6					
	Fork lock-in position centre-centre			mm	216/368/445/521/673/760							216/368/445/521/673/760				216/368/445/521/673/760					
	Tyres	front/rear			200/50-10 / 18 x 7-8						200/50-10 / 18 x 7-8				200/50-10 / 18 x 7-8						
	Track	front/rear	b_{10}/b_{11}	mm	942/895					990/895		942/895			942/895			990/895			
Maximum width		b_1	mm	1138					1188		1138			1138			1188				

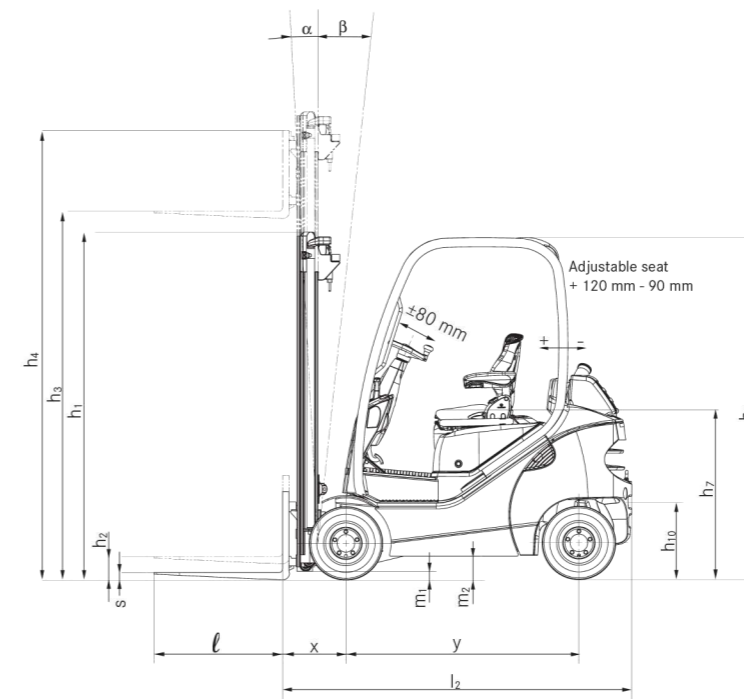
Technical Drawings



Top view

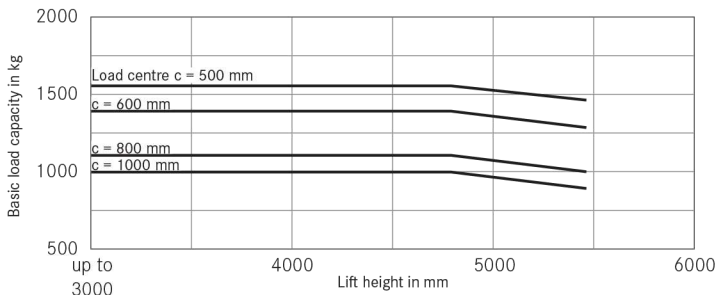


Top view

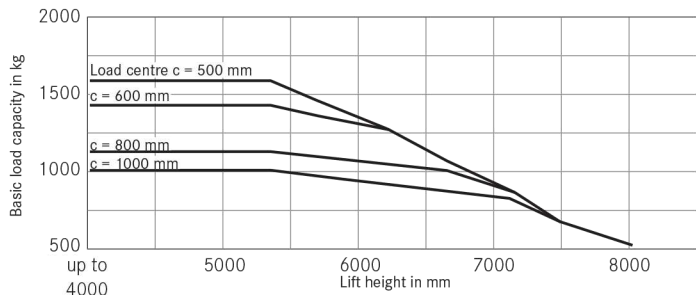


Side view

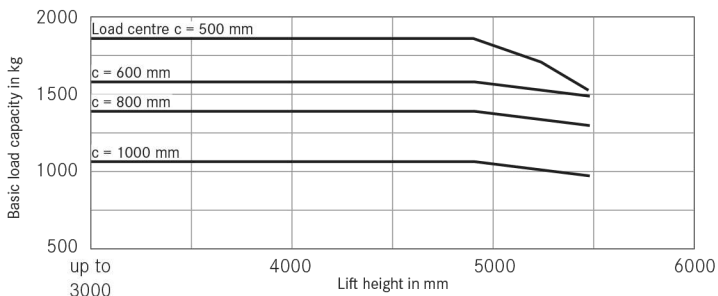
**RX 70-16 Telescopic and HiLo mast
Superelastic tyres**



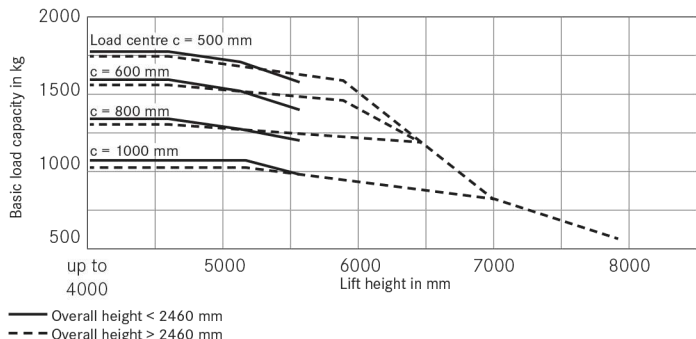
**RX 70-16 Triplex mast
Superelastic tyres**



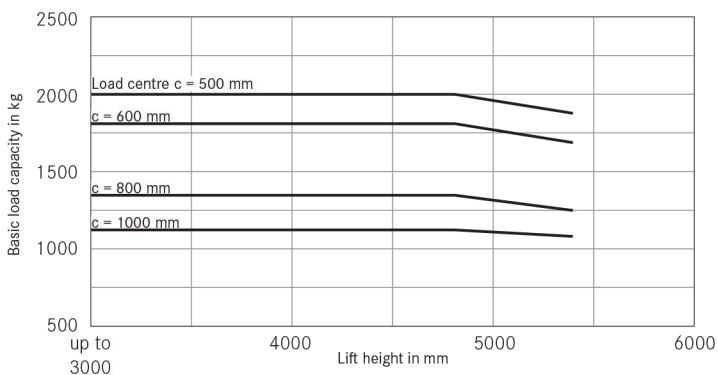
**RX 70-18 Telescopic and HiLo mast
Superelastic tyres**



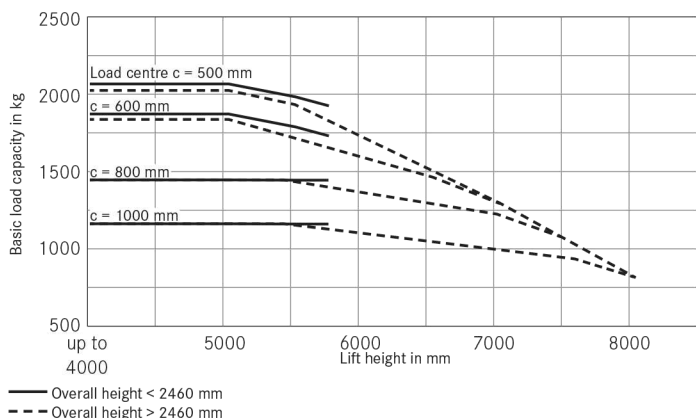
**RX 70-18 Triplex mast
Superelastic tyres**



**RX 70-20 Telescopic and HiLo mast
Superelastic tyres**



**RX 70-20 Triplex mast
Superelastic tyres**



The values indicated may vary depending on the truck's features





Intuitive and precise operation of the hydraulic functions



Ergonomic, non-tiring and precise work with Joystick 4Plus



Spaciously dimensioned and comfortable driver's cab



Spacious access area with comfortable dual pedal controls



Comfortable, high quality driver's seat



Optimum visibility thanks to narrow protective roof profiles



Good service and maintenance access



Safe and convenient entry and exit thanks to large, non-slip and clearly visible step



High availability, extended period of use and low operating costs through a diesel-electric drive with a powerful industrial motor

High energy efficiency due to Blue-Q energy-saving mode

Safe and convenient load handling thanks to precise and direct hydraulics operation



The RX 70-16/20 LPG forklift truck with a load capacity of up to two tonnes combines the advantages of the powerful combustion engine with the precision control of an electric drive, guaranteeing high availability, a long service life and lower operating costs. The compact design and high manoeuvrability coupled with sensitive transmission and lifting control ensure outstanding handling performance. All drive components are encased to provide protection against dust and water ingress. As a result, the trucks are perfect for a range of applications, including indoor and outdoor use in the construction industry, building materials sector and wood processing, the

metalworking industry and the food and beverage industry. Customers in the logistics and freight-carrier industries also stand to benefit. The bend-proof and torsionally rigid mast allows safe load handling, even for heavy loads with a high residual load capacity. The comfortable driver's cab incorporates the latest ergonomic criteria to combat fatigue and improve safety. Driving and lifting behaviour can be aligned to individual driver habits. Five pre-defined driving programmes are available. Blue-Q energy-saving mode saves up to 10 per cent energy at the press of a button, with no loss of performance.

The 'Simply Efficient' factors: Performance attributes as a measure of economic efficiency

Simply easy

- Intuitive handling: standard, easy-to-use operating concept across the whole RX product line
- Spacious, comfortable and customisable driver's cab with a multitude of storage options

Simply powerful

- High performance: powerful drive meets precise control
- Effective goods handling: travel speed of up to 22 km/h
- Can lift up to two tonnes with a load centre of 500 mm
- Powerful and efficient: Drive with hybrid technology enables high handling rate with low consumption
- Safe load handling even with heavy loads due to robust, bend-proof and torsionally rigid mast

Simply safe

- Perfect all-round visibility thanks to narrow mast profile, large windows on all sides and narrow protective profiles
- Asymmetrically offset driver's seat affords excellent view of load and fork carriage
- Optimum safety and stability thanks to the truck's low centre of gravity
- Secure load handling thanks to precise and direct hydraulic control

Simply flexible

- Choice of 5 driving modes: select maximum turnaround or maximum efficiency
- Speed, acceleration and braking can all be individually configured
- Choose from a range of individual control options: mini-lever, Fingertip or Joystick 4Plus

Simply connected

- Digital Performance Boost: optional interface for integration into fleet management software, such as STILL neXXt fleet
- Flexible networking: the provision for MMS means that the truck can be integrated into every material flow management system with ease



RX 70-16/20 Diesel and LPG Forklift Truck

Equipment Variants

	RX 70-16 T	RX 70-18 T	RX 70-20 T	
Driver's cab	Impact-absorbing driver's seat for optimal comfort on uneven routes	●	●	●
	Protective steel roof, height 2,117 mm	●	●	●
	Weather protection design in different variants	○	○	○
	Driver's cab (height: 2,139 mm) or tarpaulin cab	○	○	○
	Tinted front windscreen, rear and front windows, windscreen washing/wiping system	○	○	○
	Single-pedal drive control	●	●	●
	Double-pedal drive control	○	○	○
	Built-in storage and cup holder	●	●	●
	Display and function buttons protected from water spray	●	●	●
	Writing pad support and clipboard (removable) with a light	○	○	○
	Grammer driver's seat with leatherette cover	●	●	●
	Comfortable driver's seat with textile cover and lumbar support	○	○	○
	Swivel seat for a healthy body posture when reversing	○	○	○
	Driver's seat exclusively with leatherette or textile cover, mechanical or airsprung, extra-wide seat pad, large suspension travel, lumbar support, height-adjustable back extension and heated seat	○	○	○
	Horizontal spring plate for driver's seat to minimise human vibrations	○	○	○
	Roof liner with interior lighting	○	○	○
	Radio/MP3 player with USB connection	○	○	○
	Adjustable roof window	○	○	○
	Protective sunshade and sun blind	○	○	○
	Mast	Water heating with blower and defroster nozzles for front windscreen and footwell	○	○
Air conditioning		○	○	○
Telescopic free view mast with and without full free lift		○	○	○
Triplex free view mast		○	○	○
Fork wear protection		○	○	○
Different fork carriage widths and integrated side shifter		○	○	○
Load backrest		○	○	○
Automatic vertical mast position		○	○	○
Hydraulic accumulator in the lifting cylinder to attenuate pressure peaks in the hydraulic system		○	○	○
Angle of incline 3/6 or 3/8 degrees front/rear incline		●	●	●
Tyres	Bellows protect the tilt cylinder from dust and moisture	○	○	○
	Superelastic tyres, SIT system, single or twin	●	●	●
	Superelastic tyres, SIT system, natural colour or anti-static	○	○	○
Hydraulics	Single air-filled tyre	○	○	○
	Proportional valve technology for especially sensitive movements	●	●	●
	Mini-lever with armrest, two levers	●	●	●
	Mini-lever with armrest, 3 or 4 levers, Joystick 4Plus or Fingertip	○	○	○
	Up to three hydraulic circuits for controlling accessories	○	○	○
Drive	Custom parametrisation of hydraulic functions	●	●	●
	Five driving programmes for different driving and braking behaviour	●	●	●
	Blue-O energy-saving mode	●	●	●
	Smooth acceleration and reversing	●	●	●
	Maintenance-free drives for driving, steering and lifting	●	●	●
	Travel and lift drive components encased to protect against dust and dirt	●	●	●
	Dry air filter with maintenance indicator	●	●	●
	Additional air filter or cyclone pre-separator	○	○	○
	Gas forklift with LPG cylinders	●	●	●
	40 litre LPG tank	○	○	○
Brake	Automatic engine shut-off	○	○	○
	Engine preheating via external power connection	○	○	○
	Regulated 3-way catalytic converter	○	○	○
	Wear-free disc brakes that run in an oil bath	●	●	●
	Energy recovery when braking	●	●	●
Safety	Hydraulic parking brake	●	●	●
	Forklift truck has a low centre of gravity and steering axle with high self-aligning bearing for optimum levels of safety	●	●	●
	Protective grille roof	○	○	○
	Narrow protective roof profile for an optimum all-round view	●	●	●
	Restraint system: IWS side restraints on both sides and Easybelt to be engaged and disengaged quickly and safely	○	○	○
	Lighting system in halogen or LED design, approvable	○	○	○
	Working lights in halogen or LED design	○	○	○
	Roof window in rear protective roof area, improved visibility when reversing	●	●	●
	Warning flash light	○	○	○
	STILL Safety Light warning device, illuminated blue	○	○	○
Safety	Seat belt control, drive unit only enabled when seat belt is fastened	○	○	○
	Speed limiter adjustable by driver	○	○	○
	Tempomat cruise control	○	○	○
	Load measuring with ±5% precision	○	○	○
	FleetManager: access authorisation, shock detection, reports	○	○	○

● Standard ○ Option — Not available

STILL GmbH
Berzeliusstr. 10
22113 Hamburg
Germany
Tel.: +49 40 73 39 20 00
Fax: +49 40 73 39 20 01
info@still.de

For further information please visit
www.still.eu



Gemini Equipment And Rentals Pvt. Ltd.
1706-1709, The Corporate Park 17th Floor Plot No-14-15
Vashi Navi Mumbai -400705, India.
Email id : info@gear-india.com | Contact No: +918451934343 |
Website: www.gear-india.com

STILL is certified in the following
areas: Quality management,
occupational safety, environmental
protection and energy management.



ISM=ISO 9001=ISO 14001
OHSAS 18001=ISO 50001