

RX 70 Technical Data Diesel and LPG Forklift Trucks

RX 70-40

RX 70-45

RX 70-50

RX 70-50/600





RX 70-40/50 Diesel and LPG Forklift Trucks

The benchmark for efficiency

This specification sheet, which conforms to VDI guideline 2198, provides the technical values for the standard equipment only. Different tyres, other masts, the use of accessories etc. may result in other values.

				STILL	STILL	STILL	STILL	STILL	STILL	STILL	STILL	
				RX 70-40	RX 70-40 T	RX 70-45	RX 70-45 T	RX 70-50	RX 70-50 T	RX 70-50/600	RX 70-50/600 T	
Features	1.1	Manufacturer										
	1.2	Manufacturer's model designation										
	1.2.1	Manufacturer's type designation										
	1.3	Drive										
	1.4	Operation										
	1.5	Rated capacity		Q	kg	4000	4000	4500	4500	4999	4999	5000
	1.6	Load centre		c	mm	500	500	500	500	500	500	600
	1.8	Load distance		x	mm	540	540	540	540	540	540	550
	1.9	Wheel base		y	mm	2005	2005	2005	2005	2070	2070	2125
Weights	2.1	Service weight (incl. battery)			kg	6076	6076	6278	6278	6590	6590	
	2.2	Axle load, laden		front/rear	kg	8896/1180	8896/1180	9632/1146	9632/1146	10468/1122	10468/1122	
	2.3	Axle load, unladen		front/rear	kg	2821/3255	2821/3255	2798/3480	2798/3480	2955/3635	2955/3635	
Tyres/chassis	3.1	Tyres				Superelastic	Superelastic	Superelastic	Superelastic	Superelastic	Superelastic	
	3.2	Tyre size		front	mm	250-15	250-15	28 x 12.5-15	28 x 12.5-15	28 x 12.5-15	28 x 12.5-15	
	3.2	Tyre size		rear	mm	250-15	250-15	250-15	250-15	250-15	250-15	
	3.5	Number of wheels (x = driven)		front/rear		2x/2	2x/2	2x/2	2x/2	2x/2	2x/2	
	3.6	Track width		front/rear	b ₁₀ /b ₁₁	mm	1136/1120	1136/1120	1210/1120	1210/1120	1210/1120	1210/1120
	Basic dimensions	4.1	Tilt of mast/fork carriage		forward/backward	α/β	°	6/7	6/7	6/7	6/7	6/7
4.2		Height		mast lowered	h ₁	mm	2400	2400	2400	2400	2400	
4.3		Free lift			h ₂	mm	160	160	160	160	160	
4.4		Lift			h ₃	mm	3180	3180	3180	3180	3180	
4.5		Height		mast raised	h ₄	mm	4187	4187	4187	4187	4187	
4.7		Height over overhead guard (cab)			h ₆	mm	2320	2320	2300	2300	2300	
4.8		Seat height rel. to SIP			h ₇	mm	1298	1298	1298	1298	1298	
4.12		Coupling height			h ₁₀	mm	496	496	496	496	496	
4.19		Overall length			l ₁	mm	4027	4027	4071	4071	4098	
4.20		Length including fork backs			l ₂	mm	3027	3027	3071	3071	3098	
4.21		Overall width			b ₁	mm	1380	1380	1506/1380 ¹	1506/1380 ¹	1506/1380 ¹	
4.22		Fork dimensions			s/e/l	mm	50/120/1000	50/120/1000	50/120/1000	50/120/1000	50/120/1000	
4.23		Fork carriage ISO 2328, Class/Form A, B					Cl. III, Form A	Cl. III, Form A	Cl. III, Form A	Cl. III, Form A	Cl. III, Form A	
4.24		Fork carriage width			b ₃	mm	1310	1310	1310	1310	1310	
4.31		Ground clearance under mast, laden			m ₁	mm	140	140	140	140	140	
4.32		Ground clearance, centre of wheel base			m ₂	mm	165	165	165	165	165	
4.34.1		Working aisle width with pallet 1000 x 1200 crosswise			A _{st}	mm	4401	4401	4441	4441	4470	
4.34.2		Working aisle width with pallet 800 x 1200 lengthways			A _{st}	mm	4601	4601	4641	4641	4670	
4.35		Turning radius			W _a	mm	2661	2661	2701	2701	2730	
4.36	Smallest pivot point distance			b ₁₃	mm	737	737	737	737	746		
Performance data	5.1	Driving speed		laden/unladen	km/h	21/21	21/21	21/21	21/21	21/21	21/21	
	5.2	Lifting speed		laden/unladen	m/s	0.59/0.59	0.59/0.59	0.50/0.54	0.50/0.54	0.50/0.54	0.50/0.54	
	5.3	Lowering speed		laden/unladen	m/s	0.50/0.50	0.50/0.50	0.50/0.50	0.50/0.50	0.50/0.50	0.50/0.50	
	5.5	Traction		laden/unladen	N	22210/20010	22210/20010	22160/20130	22160/20130	22100/21830	22100/21830	
	5.7	Gradeability		laden/unladen	%	22/35	22/33	21/34	21/32	20/33	20/31	
	5.9	Acceleration time		laden/unladen	s	5.2/4.7	5.1/4.6	5.5/4.8	5.4/4.7	5.9/4.9	5.6/4.8	
5.10	Service brake					Mechanical/hydraulic	Mechanical/hydraulic	Mechanical/hydraulic	Mechanical/hydraulic	Mechanical/hydraulic		
IC engine	7.1	Engine manufacturer				Deutz	Linde MH	Deutz	Linde MH	Deutz	Linde MH	
	7.1.1	Type				TCD 2.9 L4	CWT S1	TCD 2.9 L4	CWT S1	TCD 2.9 L4	CWT S1	
	7.2	Engine rating to ISO 1585			kW	54	55	54	55	54	55	
	7.3	Nominal speed			l/min	2200	2200	2200	2200	2200	2200	
	7.4	Number of cylinders				4	6	4	6	4	6	
	7.4.1	Capacity			cm ³	2900	3600	2900	3600	2900	3600	
	7.5	Fuel consumption according to VDI Cycle			l/h kg/h	4.1	3.8	4.3	4.0	4.6	4.3	
	7.9	On-board voltage		U	V	12	12	12	12	12	12	
8.1	Drive control					Diesel-electric	Diesel-electric	Diesel-electric	Diesel-electric	Diesel-electric		
Miscellaneous	10.1	Working pressure for attachments			bar	250	250	250	250	250	250	
	10.2	Oil volume for attachments			l/min	30	30	30	30	30	30	
	10.4	Volume fuel tank			l kg	56	22	56	22	56	22	
	10.7	Sound pressure level ² L _{pAZ} (driver's seat)			dB(A)	<75	<76	<75	<76	<75	<76	
	10.7.1	Sound power level LWAZ (work cycle)			dB(A)	<98	<99	<98	<99	<98	<99	
		Human vibrations ³ : in accordance with EN 13059			m/s ²	0.47	0.47	0.47	0.47	0.47	0.47	
10.8	Towing coupling Type/Model DIN				Pin	Pin	Pin	Pin	Pin	Pin		

¹ With reduced basic load capacity and/or restricted lifting height

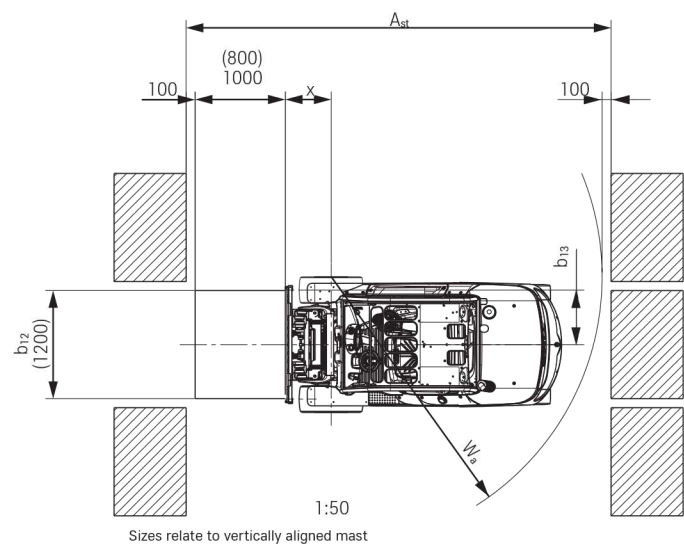
² With cab; higher sound level without cab

³ With standard driver's seat

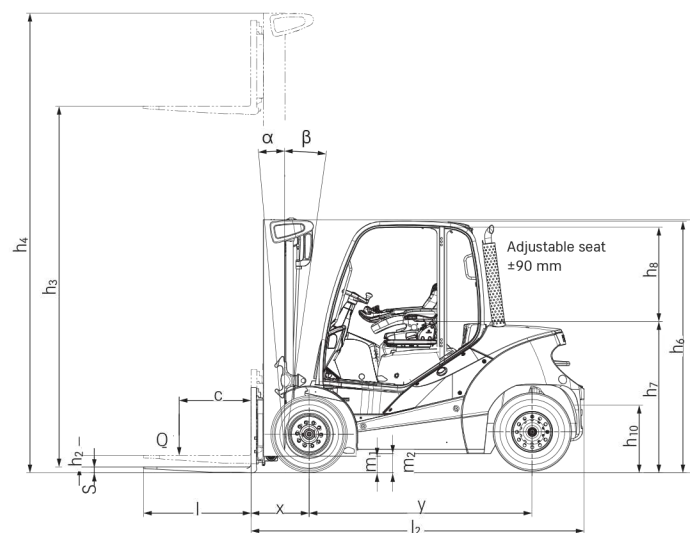
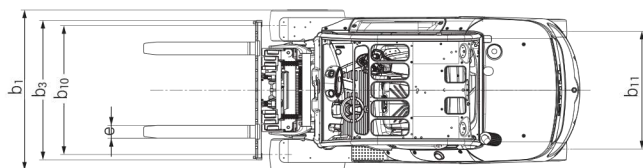


		Telescopic mast									Triplex mast									
RX 70-40 - RX 70-40 T	Nominal lift	h_3	mm	2980	3180	3480	3680	4080	4480	4880	4030	4330	4630	5080	5380	5980	6580	7180		
	Overall height	h_1	mm	2300	2400	2550	2650	2850	3050	3250	2150	2250	2350	2500	2600	2800	3000	3200		
	Free lift	h_5	mm	160	160	160	160	160	160	160	1390	1490	1590	1740	1840	2040	2240	2440		
	Maximum height	h_4	mm	3762	3962	4262	4462	4862	5262	5662	4835	5135	5435	5885	6185	6785	7385	7985		
	Tilt of mast/fork carriage	forward/backward	α/β	° 6/7									6/7							
	Fork lock-in position centre-centre		mm	191/368/572/673/978 (fork carriage 1310/1410 mm)/1080 (fork carriage 1410 mm)									191/368/572/673/978 (fork carriage 1310/1410 mm)/1080 (fork carriage 1410 mm)							
	Tyres	front/rear		250-15 (7.00-15 twin tyres) / 250-15									250-15 (7.00-15 twin tyres) / 250-15							
	Track	front/rear	b_{10}/b_{11}	mm 1136 (1364 twin tyres) / 1120									1136 (1364 twin tyres) / 1120							
	Maximum width		b_1	mm 1380 (1769 twin tyres)									1380 (1769 twin tyres)							
		Telescopic mast									Triplex mast									
RX 70-45 - RX 70-50 - RX 70-50 T	Nominal lift	h_3	mm	2980	3180	3480	3680	4080	4480	4880	4030	4330	4630	5080	5380	5980	6580	7180		
	Overall height	h_1	mm	2300	2400	2550	2650	2850	3050	3250	2150	2250	2350	2500	2600	2800	3000	3200		
	Free lift	h_5	mm	160	160	160	160	160	160	160	1238	1338	1590	1740	1840	2040	2240	2440		
	Maximum height	h_4	mm	3987	4187	4487	4687	5087	5487	5887	4987	5287	5587	6037	6337	6937	7537	8137		
	Tilt of mast/fork carriage	forward/backward	α/β	° 6/7									6/7							
	Fork lock-in position centre-centre		mm	191/368/572/673/978 (fork carriage 1310/1410 mm)/1080 (fork carriage 1410 mm)									191/368/572/673/978 (fork carriage 1310/1410 mm)/1080 (fork carriage 1410 mm)							
	Tyres	front/rear		28 x 12.5-15 (7.00-15 twin tyres) / 250-15									28 x 12.5-15 (7.00-15 twin tyres) / 250-15							
	Track	front/rear	b_{10}/b_{11}	mm 1210 (1364 twin tyres) / 1120									1210 (1364 twin tyres) / 1120							
	Maximum width		b_1	mm 1506 (1769 twin tyres)									1506 (1769 twin tyres)							
		Telescopic mast									Triplex mast									
RX 70-45 T	Nominal lift	h_3	mm	2980	3180	3480	3680	4080	4480	4880	4030	4330	4630	5080	5380	5980	6580			
	Overall height	h_1	mm	2300	2400	2550	2650	2850	3050	3250	2150	2250	2350	2500	2600	2800	3000			
	Free lift	h_5	mm	160	160	160	160	160	160	160	1238	1338	1590	1740	1840	2040	2240			
	Maximum height	h_4	mm	3987	4187	4487	4687	5087	5487	5887	4987	5287	5587	6037	6337	6937	7537			
	Tilt of mast/fork carriage	forward/backward	α/β	° 6/7									6/7							
	Fork lock-in position centre-centre		mm	191/368/572/673/978 (fork carriage 1310/1410 mm)/1080 (fork carriage 1410 mm)									191/368/572/673/978 (fork carriage 1310/1410 mm)/1080 (fork carriage 1410 mm)							
	Tyres	front/rear		28 x 12.5-15 (7.00-15 twin tyres) / 250-15									28 x 12.5-15 (7.00-15 twin tyres) / 250-15							
	Track	front/rear	b_{10}/b_{11}	mm 1210 (1364 twin tyres) / 1120									1210 (1364 twin tyres) / 1120							
	Maximum width		b_1	mm 1506 (1769 twin tyres)									1506 (1769 twin tyres)							
		Telescopic mast									Triplex mast									
RX 70-50/600 - RX 70-50/600 T	Nominal lift	h_3	mm	2780	2980	3280	3480	3880	4280	4680	3730	4030	4330	4730	5080	5680	6280	6880		
	Overall height	h_1	mm	2300	2400	2550	2650	2850	3050	3250	2150	2250	2350	2500	2600	2800	3000	3200		
	Free lift	h_5	mm	160	160	160	160	160	160	160	1130	1230	1330	1480	1580	1780	1980	2180		
	Maximum height	h_4	mm	3887	4087	4387	4587	4987	5387	5787	4795	5095	5395	5845	6145	6745	7345	7945		
	Tilt of mast/fork carriage	forward/backward	α/β	° 6/7									6/7							
	Fork lock-in position centre-centre		mm	191/368/572/673/978 (fork carriage 1310/1410 mm)/1080 (fork carriage 1410 mm)									191/368/572/673/978 (fork carriage 1310/1410 mm)/1080 (fork carriage 1410 mm)							
	Tyres	front/rear		28 x 12.5-15 (7.00-15 twin tyres) / 250-15									28 x 12.5-15 (7.00-15 twin tyres) / 250-15							
	Track	front/rear	b_{10}/b_{11}	mm 1210 (1364 twin tyres) / 1120									1210 (1364 twin tyres) / 1120							
	Maximum width		b_1	mm 1506 (1769 twin tyres)									1506 (1769 twin tyres)							

Technical Drawings

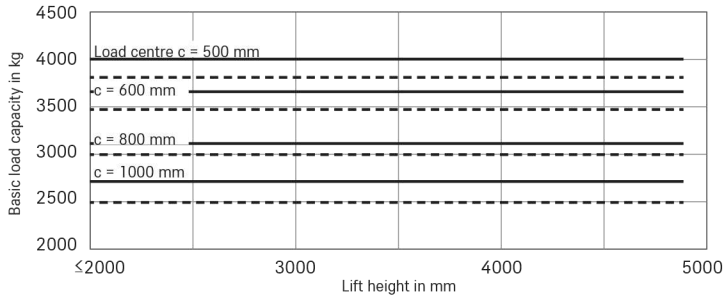


Top view

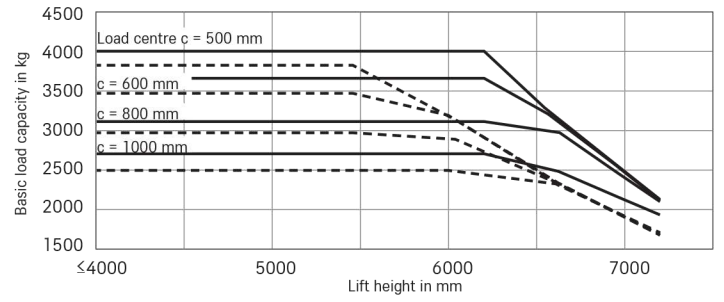


Side view

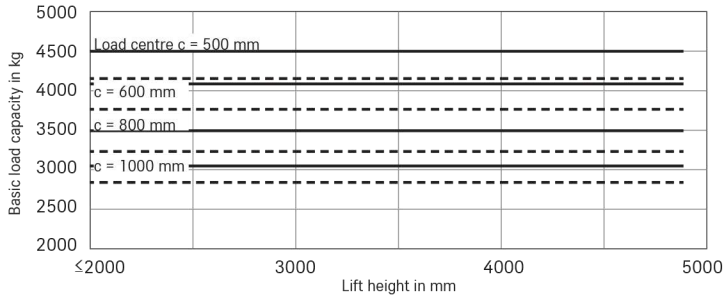
RX 70-40 Telescopic mast
single superelastic tyres



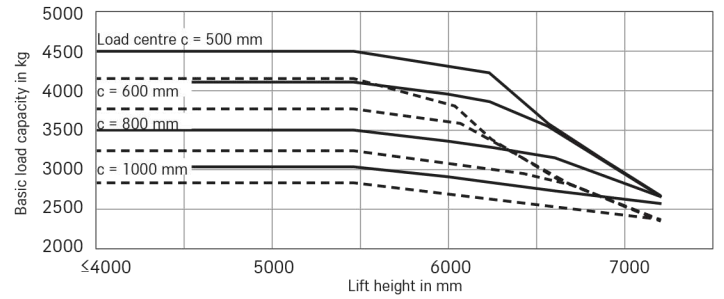
RX 70-40 Triplex mast
single superelastic tyres



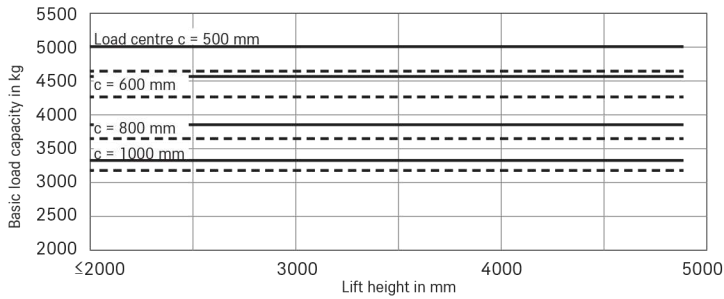
RX 70-45 Telescopic mast
single superelastic tyres



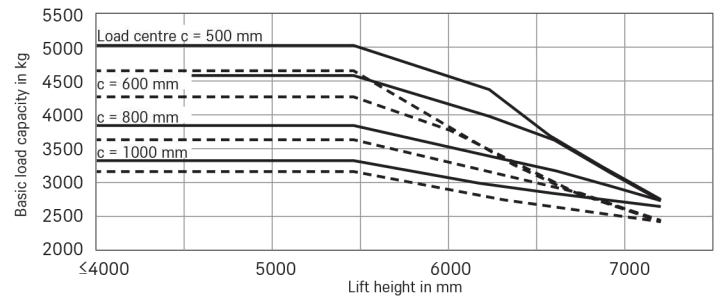
RX 70-45 Triplex mast
single superelastic tyres



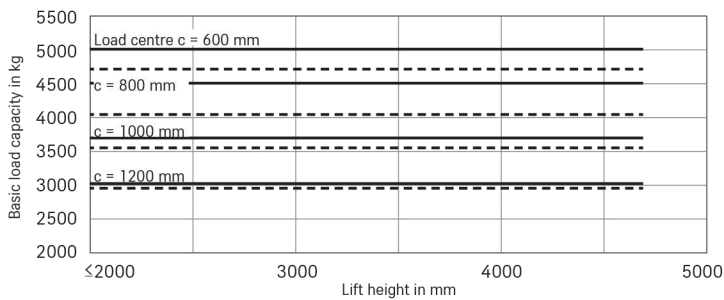
RX 70-50 Telescopic mast
single superelastic tyres



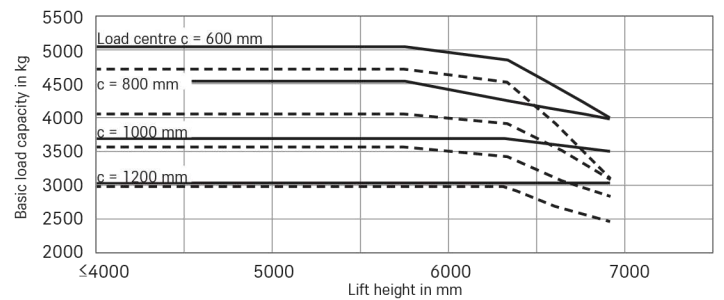
RX 70-50 Triplex mast
single superelastic tyres



RX 70-50/600 Telescopic mast
single superelastic tyres



RX 70-50/600 Triplex mast
single superelastic tyres



— With standard forks - - - With integrated side shifter and standard forks
The values indicated may vary depending on the truck's features





Maximum visibility thanks to numerous windows and narrow overhead guard profiles



Additional protective grille roof



Superior comfort thanks to high-quality driver's seat



Narrow mast profiles for excellent visibility of forks and load at all times



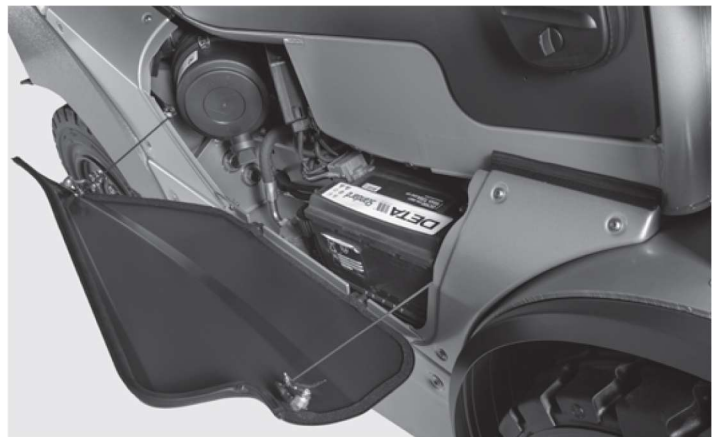
Precise and fatigue-free working with the Joystick 4Plus



Wide, unrestricted entry and exit area



Also available as an LPG variant



Good servicing and maintenance access

High availability, longer service life and low operating costs thanks to diesel-electric drive

Individually adjustable: driving and lifting behaviour can be tailored to operational circumstances and driver preferences

Modern, easy-servicing DEUTZ industrial diesel engine meets the emission standard with oxidation catalyst alone (without diesel particulate filter)



The RX 70-40/50 IC trucks with a load capacity of up to five tonnes have been fitted with a diesel-electric drive. This combines the advantages of a powerful internal combustion engine with the precision of an electric drive, guaranteeing high availability, a longer service life and lower operating costs. With their compact design and high manoeuvrability coupled with sensitive transmission and lifting control, the RX 70-40/50 IC trucks enable top handling performance. The driving and lifting behaviour can be adjusted to operational circumstances or driver preferences. All drive components are encapsulated to provide protection against dust and water penetration.

As a result the trucks are perfect for a range of applications, including indoor and outdoor use in the construction industry, building materials sector and wood processing, the metalworking industry as well as the food and beverages industry. Customers in the logistics and freight-carrier industries also stand to benefit. The bend-proof and torsionally rigid mast allows safe load handling, even for heavy loads with a high residual load capacity. The comfortable driver's cab incorporates the latest ergonomic criteria to combat fatigue and improve safety. Five driving programmes are available. The Blue-Q energy-saving mode cuts energy consumption by 10 per cent with no loss of performance.

The 'Simply Efficient' factors: Performance attributes as a measure of economic efficiency

Simply easy

- Climb in, be comfortable and get going, thanks to the spacious driver's cab with adjustable steering column and premium driver's seat
- Choose from a range of individual control options: mini-lever, Fingertip or Joystick 4Plus
- Enjoy a spacious and comfortable driver's cab that can be individually set up and offers numerous storage compartments

Simply powerful

- Combination of diesel-electric drive and powerful industrial engines ensures high availability, long service life and low operating costs
- Lifting capacity of up to five tonnes with a load centre of 600 mm
- Fast goods handling thanks to driving speeds of up to 21 km/h

Simply safe

- Perfect all-round view thanks to narrow mast profile and large viewing windows on all sides
- Asymmetrically offset driver's seat affords excellent view of load and fork carriage
- Optimum safety and stability thanks to truck's low centre of gravity
- Large, non-slip step and grab handles for high operator safety standards
- Maximum protection for drivers thanks to the robust, rigid and warp-resistant mast
- Sensitive hydraulic controls ensure safe load handling and prevent damage to goods

Simply flexible

- Five driving programmes ensure perfect set-up for every requirement, from maximum handling capacity to optimum efficiency
- Truck settings can be adapted to the operator: speed, acceleration and braking can all be individually set
- Suitable for use throughout Europe: latest exhaust gas regeneration technology ensures emissions are well within Euro 5 standards
- Top handling performance thanks to compact design, excellent manoeuvrability and sensitive driving and lifting controls

Simply connected

- Digital performance boost: optional interface for integration into fleet management software such as STILL neXXt fleet
- Flexible networking options: provision for MMS means the truck can be easily integrated into any material flow management system



RX 70-40/50 Diesel and LPG Forklift Trucks

Equipment Variants

	RX 70-40	RX 70-40 T	RX 70-45	RX 70-45 T	RX 70-50	RX 70-50 T	RX 70-50/600	RX 70-50/600 T	
Driver's cab	Impact-absorbing driver's seat for optimal comfort on uneven routes	●	●	●	●	●	●	●	
	Steel protective roof (height approx. 2,325 mm)	●	●	●	●	●	●	●	
	Low protective roof (height approx. 2,215 mm)	○	○	○	○	○	○	○	
	High protective roof (height approx. 2,725 mm)	○	○	—	○	—	○	—	
	Weather protection design in different variants	○	○	○	○	○	○	○	
	Driver's cab	○	○	○	○	○	○	○	
	Tarpaulin cab	○	○	○	○	○	○	○	
	Tinted front windscreen, rear and front windows, windscreen washing/wiping facility	○	○	○	○	○	○	○	
	Single-pedal transmission control	●	●	●	●	●	●	●	
	Double-pedal transmission control	○	○	○	○	○	○	○	
	Built-in storage and cup holder	●	●	●	●	●	●	●	
	Display and function buttons protected from water spray	●	●	●	●	●	●	●	
	Writing pad with clipboard (removable) and light	○	○	○	○	○	○	○	
	Grammer driver's seat with leatherette cover	●	●	●	●	●	●	●	
	Comfort driver's seat with textile cover and lumbar support	○	○	○	○	○	○	○	
	Exclusive driver's seat with leatherette or textile cover, mechanical or airsprung, extra-wide seat pad, large suspension travel, lumbar support, height-adjustable back extension and heated seat	○	○	○	○	○	○	○	
	Horizontal spring plate for driver's seat to minimise human vibrations	○	○	○	○	○	○	○	
	Document pocket on the seat back	○	○	○	○	○	○	○	
	Roof liner with interior lighting	○	○	○	○	○	○	○	
	Radio/MP3 player with USB connection	○	○	○	○	○	○	○	
	Adjustable roof window	○	○	○	○	○	○	○	
	Protective sunshade and sun blind	○	○	○	○	○	○	○	
	Water heating with blower and defroster nozzles for front windscreen and footwell	○	○	○	○	○	○	○	
	Air conditioning	○	○	○	○	○	○	○	
	Mast	Telescopic free view mast	○	○	○	○	○	○	○
		Triplex free view mast	○	○	○	○	○	○	○
Fork wear protection		○	○	○	○	○	○	○	
Different fork carriage widths and integrated side shifter		○	○	○	○	○	○	○	
Load backrest		○	○	○	○	○	○	○	
Automatic mast vertical position		○	○	○	○	○	○	○	
Hydraulic accumulator in the lifting cylinder to attenuate pressure peaks in the hydraulic system		○	○	○	○	○	○	○	
Tyres	Angle of incline 6/7° front/rear incline	●	●	●	●	●	●	●	
	Bellows protect the tilt cylinder from dust and moisture	○	○	○	○	○	○	○	
	Superelastic tyres, SIT system, single or twin	●	●	●	●	●	●	●	
Hydraulics	Superelastic tyres, SIT system, natural colour or anti-static	○	○	○	○	○	○	○	
	Pneumatic tyres, single or twin	○	○	○	○	○	○	○	
	Proportional valve technology for especially sensitive movements	●	●	●	●	●	●	●	
	Joystick 4Plus or Fingertip	○	○	○	○	○	○	○	
	Up to three hydraulic circuits for controlling accessories	○	○	○	○	○	○	○	
	Custom parametrisation of hydraulic functions	●	●	●	●	●	●	●	
	Mini-lever with armrest, two levers	●	●	●	●	●	●	●	
Mini-lever with armrest, three or four levers	○	○	○	○	○	○	○		
Drives	Five driving programmes for different driving and braking behaviour	●	●	●	●	●	●	●	
	Blue-Q energy-saving mode	●	●	●	●	●	●	●	
	Smooth acceleration and reversing	●	●	●	●	●	●	●	
	Maintenance-free drives for driving, steering and lifting	●	●	●	●	●	●	●	
	Travel and lift drive components enclosed to protect against dust and dirt	●	●	●	●	●	●	●	
	Dry air filter with maintenance indicator	●	●	●	●	●	●	●	
	Additional air filter or cyclone pre-separator	○	○	○	○	○	○	○	
	Gas forklift with LPG cylinders	—	●	—	●	—	●	—	
	LPG tank 70 litres	—	○	—	○	—	○	—	
	Automatic engine shutdown	○	○	○	○	○	○	○	
Brake	Engine preheating via external power connection	○	○	○	○	○	○	○	
	Regulated 3-way catalytic converter	—	○	—	○	—	○	—	
	Diesel particle filter	○	—	○	—	○	—	○	
	Wear-free disc brakes that run in an oil bath	●	●	●	●	●	●	●	
	Electromechanical parking brake	○	○	○	○	○	○	○	
Safety	Hydraulic parking brake	●	●	●	●	●	●	●	
	Forklift has low centre of gravity and steering axle with high self-aligning bearing for optimum levels of safety	●	●	●	●	●	●	●	
	Protective grille roof	○	○	○	○	○	○	○	
	Narrow protective roof profile for an optimum all-round view	●	●	●	●	●	●	●	
	Easybelt restraint system for quick and safe fastening and unfastening	○	○	○	○	○	○	○	
	IWS restraint system with strap opening located on both sides	○	○	○	○	○	○	○	
	Lighting system in halogen or LED design, approvable	○	○	○	○	○	○	○	
	Working lights in halogen or LED design	○	○	○	○	○	○	○	
	Roof window in rear protective roof area, improved visibility when reversing	●	●	●	●	●	●	●	
	Flashing warning light	○	○	○	○	○	○	○	
	STILL Safety Light warning device, illuminated blue	○	○	○	○	○	○	○	
	Seat belt control, drive unit only enabled when seat belt is fastened	○	○	○	○	○	○	○	
	Speed limiter adjustable by driver	○	○	○	○	○	○	○	
	Tempomat cruise control	○	○	○	○	○	○	○	
Load measuring with ±5 per cent precision	○	○	○	○	○	○	○		
FleetManager: access authorisation, shock detection, reports	○	○	○	○	○	○	○		

● Standard ○ Optional — Not available

STILL GmbH

Berzeliusstr. 10

22113 Hamburg

Germany

Tel.: +49 40 73 39 20 00

Fax: +49 40 73 39 20 01

info@still.de

For further information please visit

www.still.eu



Gemini Equipment And Rentals Pvt. Ltd.

1706-1709, The Corporate Park 17th Floor Plot No-14-15
Vashi Navi Mumbai -400705, India.
Email id : info@gear-india.com | Contact No: +918451934343 |
Website: www.gear-india.com

STILL is certified in the following areas: Quality management, occupational safety, environmental protection and energy management.

