

## RX 70 Technical Data Diesel Forklift Truck

---

RX 70-60

RX 70-70

RX 70-80

RX 70-80/900

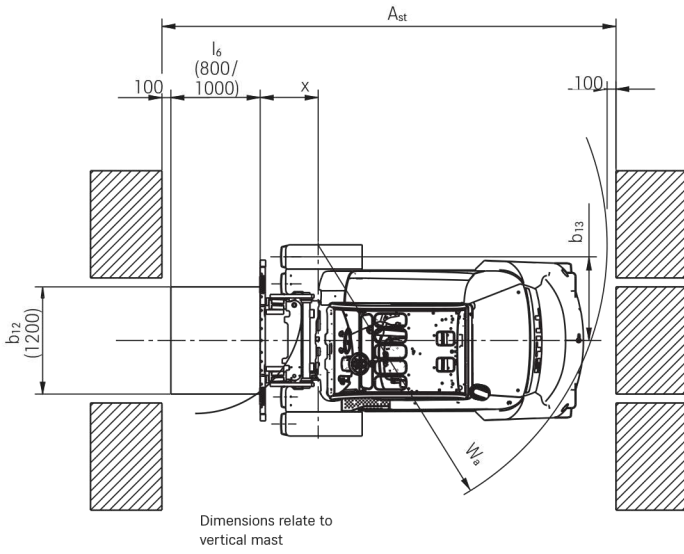




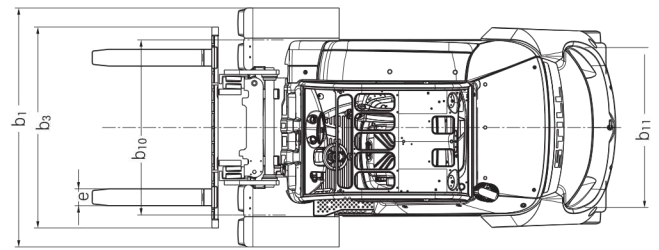
		STILL	STILL	STILL	STILL		
Distinguishing marks	1.1	Manufacturer					
	1.2	Manufacturer's model designation		<b>RX 70-60</b>	<b>RX 70-70</b>		
	1.2.1	Manufacturer's type designation		7341	7342		
	1.3	Drive		Diesel	Diesel		
	1.4	Operation		Seated	Seated		
	1.5	Nominal load capacity/load	Q	kg	6000	7000	
	1.6	Load centre	c	mm	600	600	
	1.8	Load distance	x	mm	710	720	
	1.9	Wheel base	y	mm	2285	2285	
Weights	2.1	Truck weight		kg	10477		
	2.2	Axle load, laden	front/rear	kg	14854/1623		
	2.3	Axle load, unladen	front/rear	kg	5415/5062		
Tyres/chassis	3.1	Tyres			Superelastic		
	3.2	Tyre size	front	mm	355/65-15		
	3.2	Tyre size	rear	mm	250-15		
	3.5	Number of wheels (x = driven)	front/rear		2x/2		
	3.6	Track width	front/rear	b <sub>10</sub> /b <sub>11</sub>	mm	1306/1358	
	4.1	Tilt of mast/fork carriage	forward/backward	α/β	°	5/8	
Dimensions	4.2	Height	mast lowered	h <sub>1</sub>	mm	2710	
	4.3	Free lift		h <sub>2</sub>	mm	110	
	4.4	Lift		h <sub>3</sub>	mm	3550	
	4.5	Height	mast raised	h <sub>4</sub>	mm	4440	
	4.7	Height above overhead guard (cab)		h <sub>6</sub>	mm	2697	
	4.8	Seat height rel. to SIP		h <sub>7</sub>	mm	1719	
	4.12	Coupling height		h <sub>10</sub>	mm	510/660	
	4.19	Overall length		l <sub>1</sub>	mm	4640	
	4.20	Length including fork backs		l <sub>2</sub>	mm	3440	
	4.21	Overall width		b <sub>1</sub>	mm	1597	
	4.22	Fork dimensions		s/e/l	mm	70/150/1200	
	4.23	Fork carriage ISO 2328, class/form A, B				Cl. IV, form A	
	4.24	Fork carriage width		b <sub>3</sub>	mm	1600	
	4.31	Ground clearance under mast, laden		m <sub>1</sub>	mm	220	
	4.32	Ground clearance, centre of wheel base		m <sub>2</sub>	mm	210	
	4.34.1	Working aisle width with pallet 1000 x 1200 crossways		A <sub>st</sub>	mm	4907	
	4.34.2	Working aisle width with pallet 800 x 1200 lengthways		A <sub>st</sub>	mm	5107	
	Performance data	4.35	Turning radius		W <sub>a</sub>	mm	3007
		4.36	Smallest pivot point distance		b <sub>13</sub>	mm	877
5.1		Travel speed	laden/unladen		km/h	20/20	
5.2		Lift speed	laden/unladen		m/s	0.51/0.51	
5.3		Lowering speed	laden/unladen		m/s	0.56/0.52	
5.5		Traction	laden/unladen		N	31680/31680	
5.7		Max. gradeability	laden/unladen		%	33/32	
5.9		Acceleration time	laden/unladen		s	5.4/4.9	
5.10		Service brake				Mechanical/hydraulic	
IC engine		7.1	Engine manufacturer			Deutz	
	7.1.1	Type			TCD 4.1		
	7.2	Engine rating to ISO 1585		kW	80		
	7.3	Nominal speed		l/min	2400		
	7.4	Number of cylinders			4		
	7.4.1	Capacity		cm <sup>3</sup>	4038		
	7.5	Fuel consumption according to VDI cycle		l/h	7.0		
	7.9	On-board voltage		V	12		
Miscellaneous	8.1	Drive control			Diesel-electric		
	10.1	Working pressure for attachments		bar	260		
	10.2	Oil volume for attachments		l/min	60		
	10.4	Volume fuel tank		l/kg	110		
	10.7	Sound pressure level <sup>1</sup> L <sub>pAZ</sub> (driver's seat)		dB(A)	<75		
	10.7.1	Sound power level LWAZ (work cycle)		dB(A)	<97		
		Human vibrations <sup>2</sup> in accordance with EN 13059		m/s <sup>2</sup>	0.31		
	10.8	Trailer coupling, type/model DIN			Pin		

<sup>1</sup> With cab; higher sound level without cab

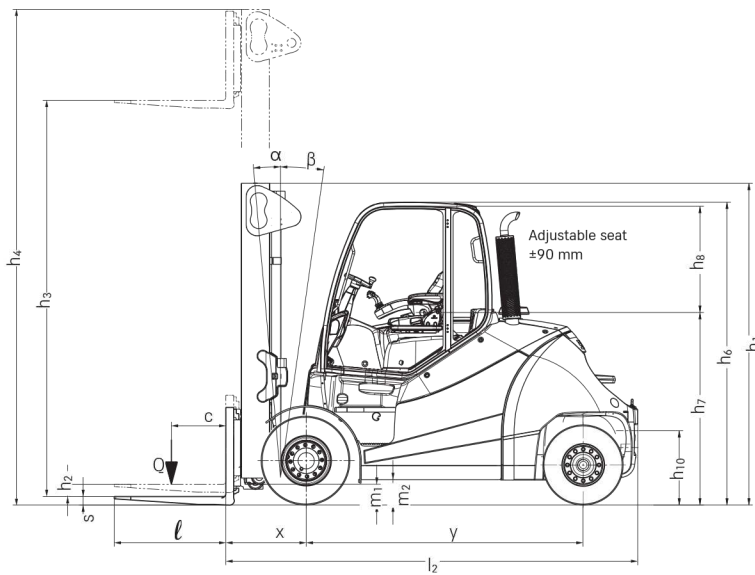
<sup>2</sup> With standard driver's seat



Top view



Top view



Side view



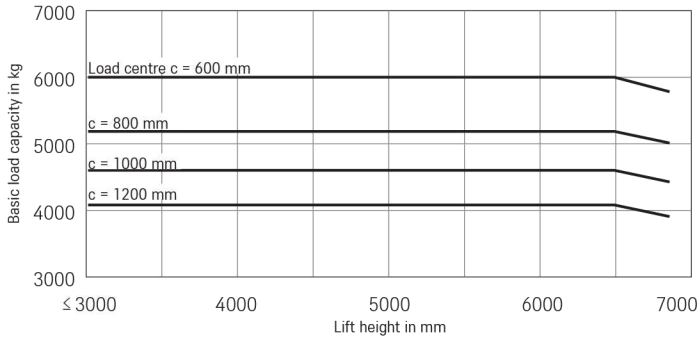
RX 70-60			Telescopic mast											Triplex mast									
	Nominal lift	h <sub>3</sub>	mm	3550	3850	4150	4550	4850	5250	5650	6050	6250	6450	6850	4770	5370	5820	6420	6870	7470	8070	8670	
	Overall height	h <sub>1</sub>	mm	2710	2860	3010	3210	3360	3560	3760	3960	4060	4160	4360	2710	2860	3010	3210	3360	3560	3760	3960	
	Free lift	h <sub>5</sub>	mm	110	110	110	110	110	110	110	110	110	110	110	1755	1905	2055	2255	2405	2605	2805	3005	
	Maximum height	h <sub>4</sub>	mm	4450	4750	5050	5450	5750	6150	6550	6950	7150	7350	7750	5660	6260	6710	7310	7760	8360	8960	9560	
	Tilt of mast/fork carriage	forward/backward	α/β	°	5/8																		
	Fork lock-in position centre-centre		mm	267/470/673/978/1181/1486 (fork carriage 1600 mm) / 1570 (fork carriage 1800 mm) / 1791 (fork carriage 2180/2400 mm) / 1866 (fork carriage 2180 mm) / 1950 (fork carriage 2400 mm) / 2096 (fork carriage 2400 mm)											267/470/673/978/1181/1486 (fork carriage 1600 mm) / 1570 (fork carriage 1800 mm) / 1791 (fork carriage 2180/2400 mm) / 1866 (fork carriage 2180 mm) / 1950 (fork carriage 2400 mm) / 2096 (fork carriage 2400 mm)								
	Tyres	front/rear		Superelastic 355/65-15 / Superelastic 28 x 9-15											Superelastic 355/65-15 / Superelastic 28 x 9-15				Superelastic 355/50-20 / Superelastic 28 x 9-15				
	Track	front/rear	b <sub>10</sub> /b <sub>11</sub>	mm	1306/1358											1306/1358				1364/1358			
	Maximum width		b <sub>1</sub>	mm	1599											1599				1647			

RX 70-70			Telescopic mast											Triplex mast									
	Nominal lift	h <sub>3</sub>	mm	3150	3450	3750	4150	4450	4850	5250	5650	5850	6050	6450	4705	5155	5605	6205	6655	7255	7855	8455	
	Overall height	h <sub>1</sub>	mm	2710	2860	3010	3210	3360	3560	3760	3960	4060	4160	4360	2710	2860	3010	3210	3360	3560	3760	3960	
	Free lift	h <sub>5</sub>	mm	110	110	110	110	110	110	110	110	110	110	110	1555	1705	1855	2055	2205	2405	2605	2805	
	Maximum height	h <sub>4</sub>	mm	4250	4550	4850	5250	5550	5950	6350	6750	6950	7150	7550	5795	6245	6695	7295	7745	8345	8945	9545	
	Tilt of mast/fork carriage	forward/backward	α/β	°	5/8																		
	Fork lock-in position centre-centre		mm	267/470/673/978/1181/1486 (fork carriage 1600 mm) / 1570 (fork carriage 1800 mm) / 1791 (fork carriage 2180/2400 mm) / 1866 (fork carriage 2180 mm) / 1950 (fork carriage 2400 mm) / 2096 (fork carriage 2400 mm)											267/470/673/978/1181/1486 (fork carriage 1600 mm) / 1570 (fork carriage 1800 mm) / 1791 (fork carriage 2180/2400 mm) / 1866 (fork carriage 2180 mm) / 1950 (fork carriage 2400 mm) / 2096 (fork carriage 2400 mm)								
	Tyres	front/rear		Superelastic twin 8.25-15 / Superelastic 250-15											Superelastic twin 8.25-15 / Superelastic 250-15								
	Track	front/rear	b <sub>10</sub> /b <sub>11</sub>	mm	1510/1358											1510/1358							
	Maximum width		b <sub>1</sub>	mm	2003											2003							

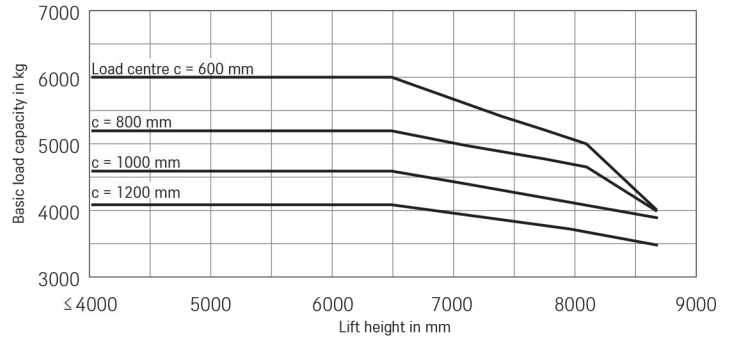
RX 70-80			Telescopic mast											Triplex mast									
	Nominal lift	h <sub>3</sub>	mm	3150	3450	3750	4150	4450	4850	5250	5650	5850	6050	6450	4705	5155	5605	6205	6655	7255	7855	8455	
	Overall height	h <sub>1</sub>	mm	2710	2860	3010	3210	3360	3560	3760	3960	4060	4160	4360	2710	2860	3010	3210	3360	3560	3760	3960	
	Free lift	h <sub>5</sub>	mm	110	110	110	110	110	110	110	110	110	110	110	1555	1705	1855	2055	2205	2405	2605	2805	
	Maximum height	h <sub>4</sub>	mm	4250	4550	4850	5250	5550	5950	6350	6750	6950	7150	7550	5795	6245	6695	7295	7745	8345	8945	9545	
	Tilt of mast/fork carriage	forward/backward	α/β	°	5/8																		
	Fork lock-in position centre-centre		mm	267/470/673/978/1181/1486 (fork carriage 1600 mm) / 1570 (fork carriage 1800 mm) / 1791 (fork carriage 2180/2400 mm) / 1866 (fork carriage 2180 mm) / 1950 (fork carriage 2400 mm) / 2096 (fork carriage 2400 mm)											267/470/673/978/1181/1486 (fork carriage 1600 mm) / 1570 (fork carriage 1800 mm) / 1791 (fork carriage 2180/2400 mm) / 1866 (fork carriage 2180 mm) / 1950 (fork carriage 2400 mm) / 2096 (fork carriage 2400 mm)								
	Tyres	front/rear		Superelastic twin 8.25-15 / Superelastic 250-15											Superelastic twin 315/70-15 / Superelastic 250-15								
	Track	front/rear	b <sub>10</sub> /b <sub>11</sub>	mm	1510/1358											1510/1358							
	Maximum width		b <sub>1</sub>	mm	2003											2125							

RX 70-80/900			Telescopic mast											Triplex mast									
	Nominal lift	h <sub>3</sub>	mm	2750	3050	3350	3750	4050	4450	4850	5250	5450	5650	6050	3955	4405	4855	5455	5905	6505	7105	7705	
	Overall height	h <sub>1</sub>	mm	2710	2860	3010	3210	3360	3560	3760	3960	4060	4160	4360	2710	2860	3010	3210	3360	3560	3760	3960	
	Free lift	h <sub>5</sub>	mm	110	110	110	110	110	110	110	110	110	110	110	1255	1405	1555	1755	1905	2105	2305	2505	
	Maximum height	h <sub>4</sub>	mm	4150	4450	4750	5150	5450	5850	6250	6650	6850	7050	7450	5345	5795	6245	6845	7295	7895	8495	9095	
	Tilt of mast/fork carriage	forward/backward	α/β	°	5/8																		
	Fork lock-in position centre-centre		mm	267/470/673/978/1181/1486 (fork carriage 1600 mm) / 1570 (fork carriage 1800 mm) / 1791 (fork carriage 2180/2400 mm) / 1866 (fork carriage 2180 mm) / 1950 (fork carriage 2400 mm) / 2096 (fork carriage 2400 mm)											267/470/673/978/1181/1486 (fork carriage 1600 mm) / 1570 (fork carriage 1800 mm) / 1791 (fork carriage 2180/2400 mm) / 1866 (fork carriage 2180 mm) / 1950 (fork carriage 2400 mm) / 2096 (fork carriage 2400 mm)								
	Tyres	front/rear		Superelastic twin 315/70-15 / Superelastic 28 x 12.5-15											Superelastic twin 315/70-15 / Superelastic 28 x 12.5-15								
	Track	front/rear	b <sub>10</sub> /b <sub>11</sub>	mm	1561/1432											1561/1432							
	Maximum width		b <sub>1</sub>	mm	2125											2125							

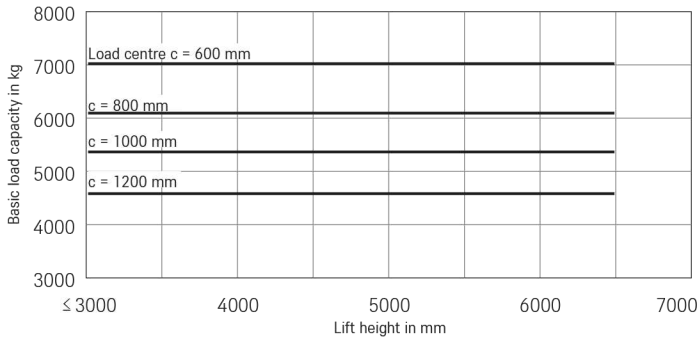
**RX 70-60 Telescopic mast**  
Single superelastic tyres



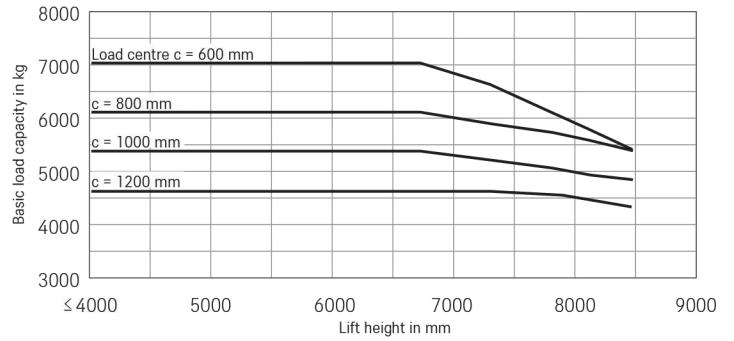
**RX 70-60 Triplex mast**  
Single superelastic tyres



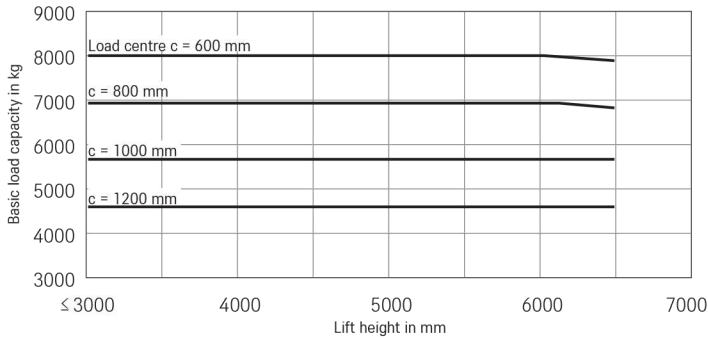
**RX 70-70 Telescopic mast**  
Superelastic twin tyres



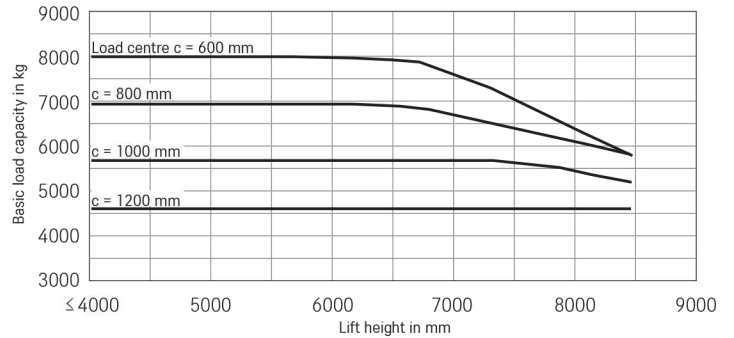
**RX 70-70 Triplex mast**  
Superelastic twin tyres



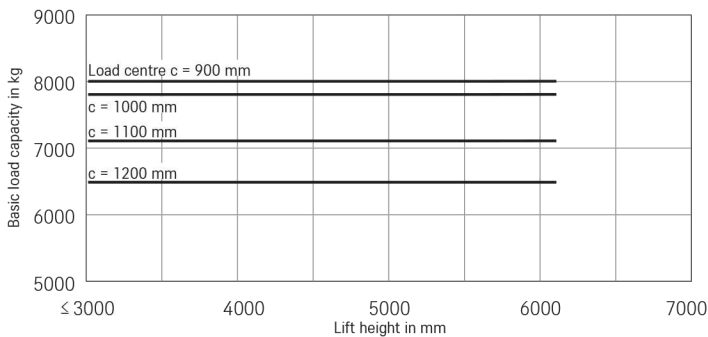
**RX 70-80 Telescopic mast**  
Superelastic twin tyres



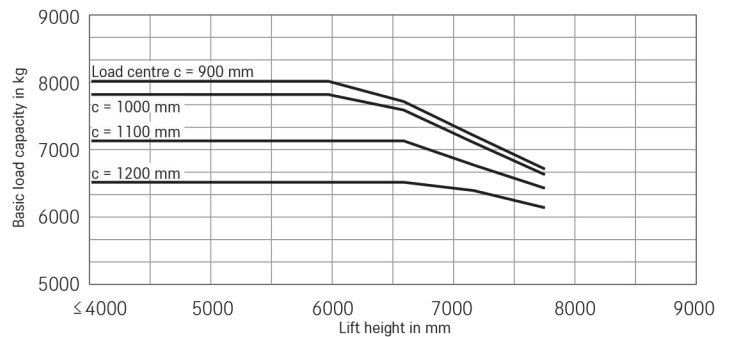
**RX 70-80 Triplex mast**  
Superelastic twin tyres



**RX 70-80 LC 900 Telescopic mast**  
Superelastic twin tyres

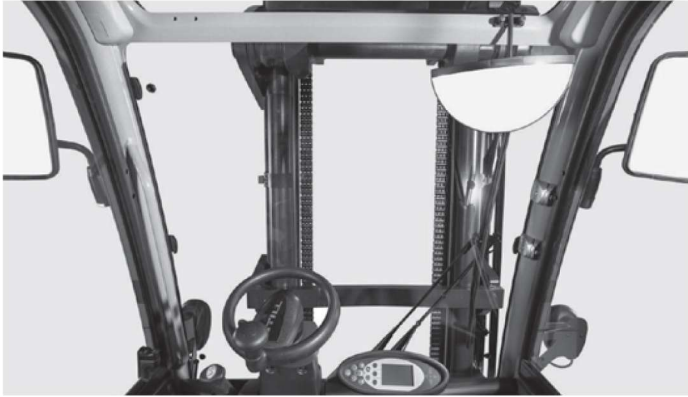


**RX 70-80 LC 900 Triplex mast**  
Superelastic twin tyres



The values may differ depending on the vehicle accessories.





Optimal view of the load and forks at all times thanks to narrow mast profiles



Spacious, comfortable driver's cab



Cyclone air filter for clean engine intake air



Sensitive hydraulic control and various storage compartments



Good servicing and maintenance access



AdBlue tank for the after-treatment of exhaust gases



Wide, unrestricted entry and exit area



Large, non-slip step for safe entry and exit





Maximum performance for optimum load handling thanks to diesel-electric drive with powerful industrial engine

Gentle, precise and safe load handling as well as direct feedback for the driver thanks to ultra-modern hydraulic technology

Best visibility due to high seat position and driver's cab offset to one side



STILL RX 70-60/80 diesel forklift trucks with a load capacity of up to 8 tonnes are equipped with a diesel-electric drive. This combines the advantages of a powerful internal combustion engine with the precision of an electric drive, guaranteeing high availability, a longer service life and lower operating costs. All drive components are encapsulated to provide protection against dust and water penetration. As a result, the trucks are perfect for a range of applications, including indoor and outdoor use in the construction industry, building materials sector and wood processing, the metalworking industry, paper industry and the beverage industry. Customers in the logistics and freight-carrier industries also stand to benefit.

The bend-proof and torsionally rigid mast allows safe load handling, even for heavy loads. With the cab offset to one side and the high seating position, the driver has an excellent all-round view. The comfortable driver's cab incorporates the latest ergonomic criteria to combat fatigue and improve safety. The driving and lifting behaviour can be tailored to operational circumstances or the driver's preferences. Five driving programmes are available. The Blue-Q energy-saving mode cuts energy consumption by 10 per cent with no loss of performance.

## The 'Simply Efficient' factors: Performance attributes as a measure of economic efficiency

### Simply easy

- Get in, be comfortable, get going: spacious driver's cab with adjustable steering column and premium driver's seat
- Customisable control options: Mini lever, Fingertip or Joystick 4Plus
- Spacious, comfortable and individually configurable driver's workplace with numerous storage options

### Simply powerful

- Diesel-electric drive with powerful industrial motors: high availability, long service life and low operating costs
- Lifts up to 8 tonnes with a load centre of 600 or 900 mm
- Fast turnover of goods: travel speed of up to 20 km/h

### Simply safe

- Perfect all-round visibility: slim mast profile and large windows on all sides
- Excellent view of the load and fork carriage thanks to an asymmetrically offset driver's seat
- Optimum stability thanks to the vehicle's low centre of gravity
- High level of user safety thanks to a wide, non-slip step and grab handles
- Optimum protection for the driver thanks to stable, bend- and torsion-resistant mast
- Sensitive, direct hydraulic control ensures safe load handling and prevents breakage of goods

### Simply flexible

- 5 driving programmes offer the optimum choice for every application - from maximum handling performance to maximum efficiency
- Vehicle characteristics adaptable to the operator: speed, acceleration and braking behaviour can be individually adjusted
- Versatile application: thanks to state-of-the-art exhaust gas regeneration, exhaust gas emission is significantly below the limits of EU standard 5
- Compact design and extreme manoeuvrability paired with sensitive drive and lift control ensure optimum work performance

### Simply connected

- Digital performance boost: optional interface for integration into fleet management software such as STILL neXXt fleet
- Flexible networking: thanks to MMS preparation, the truck can be easily integrated into any material flow management system



	RX 70-60	RX 70-70	RX 70-80	RX 70-80/900		
Driver's cab	Impact-absorbing driver's seat for optimal comfort on uneven routes	●	●	●	●	
	Steel protective roof	●	●	●	●	
	Weather protection design in different variants	○	○	○	○	
	Driver's cab, protective roof height 2,697 mm	○	○	○	○	
	Tarpaulin cab	○	○	○	○	
	Tinted front windshield, rear and front windows, windscreen washing/wiping facility	○	○	○	○	
	Single-pedal transmission control	●	●	●	●	
	Double-pedal transmission control	○	○	○	○	
	Built-in storage and cup holder	●	●	●	●	
	Display and function keys protected from water spray	●	●	●	●	
	Writing pad with clipboard (removable) and light	○	○	○	○	
	Grammer driver's seat with leatherette cover	●	●	●	●	
	Comfort driver's seat with textile cover and lumbar support	○	○	○	○	
	Swivel seat for a healthy body posture when reversing	○	○	○	○	
	Exclusive driver's seat with leatherette or textile cover, mechanical or airsprung, extra-wide seat pad, large suspension travel, lumbar support, height-adjustable back extension and heated seat	○	○	○	○	
	Horizontal spring plate for driver's seat to minimise human vibrations	○	○	○	○	
	Document pocket on the seat back	○	○	○	○	
	Roof liner with interior lighting	○	○	○	○	
	Radio/MP3 player with USB connection	○	○	○	○	
	Adjustable roof window	○	○	○	○	
	Protective sunshade and sun blind	○	○	○	○	
	Water heating with blower and defroster nozzles for front windscreen and footwell	○	○	○	○	
	Air conditioning	○	○	○	○	
	Mast	Telescopic free view mast	○	○	○	○
		Triplex free view mast	○	○	○	○
Fork wear protection		○	○	○	○	
Different fork carriage widths and integrated side shifter		○	○	○	○	
Load backrest		○	○	○	○	
Automatic mast vertical position		○	○	○	○	
Hydraulic accumulator in the lifting cylinder to attenuate pressure peaks in the hydraulic system		○	○	○	○	
Angle of incline 5/8° front/rear incline		●	●	●	●	
Bellows protect the tilt cylinder from dust and moisture		○	○	○	○	
Tyres		Superelastic tyres, SIT system, single or twin	●	●	●	●
	Superelastic tyres, SIT system, natural colour or anti-static	○	○	○	○	
	Pneumatic tyres, single or twin	○	○	○	○	
Hydraulics	Up to three hydraulic circuits for controlling accessories	○	○	○	○	
	Custom parametrisation of hydraulic functions	●	●	●	●	
	Mini-lever with armrest, two levers	●	●	●	●	
	Mini-lever with armrest, three or four levers	○	○	○	○	
	Joystick 4Plus or Fingertip	○	○	○	○	
Drives	Five driving programmes for different driving and braking behaviour	●	●	●	●	
	Blue-Q energy-saving mode	●	●	●	●	
	Smooth acceleration and reversing	●	●	●	●	
	Maintenance-free drives for driving, steering and lifting	●	●	●	●	
	Travel and lift drive components enclosed to protect against dust and dirt	●	●	●	●	
	Dry air filter with maintenance indicator	●	●	●	●	
	Additional air filter, cyclone pre-separator or oil bath air filter	○	○	○	○	
	Automatic engine shutdown	○	○	○	○	
	Engine preheating via external power connection	○	○	○	○	
	Diesel particle filter	●	●	●	●	
Brake	Wear-free disc brakes that run in an oil bath	●	●	●	●	
	Energy recovery when braking	●	●	●	●	
	Hydraulic parking brake	●	●	●	●	
Safety	Forklift has low centre of gravity and steering axle with high self-aligning bearing for optimum levels of safety	●	●	●	●	
	Protective grille roof	○	○	○	○	
	Narrow protective roof profile for an optimum all-round view	●	●	●	●	
	Easybelt restraint system for quick and safe fastening and unfastening	○	○	○	○	
	IWS restraint system with strap opening located on both sides	○	○	○	○	
	Lighting system in halogen or LED design, approvable	○	○	○	○	
	Working lights in halogen or LED design	○	○	○	○	
	Roof window in rear protective roof area, improved visibility when reversing	●	●	●	●	
	Flashing warning light	○	○	○	○	
	STILL Safety Light warning device, illuminated blue	○	○	○	○	
	Seat belt control, drive unit only enabled when seat belt is fastened	○	○	○	○	
	Speed limiter adjustable by driver	○	○	○	○	
	Tempomat cruise control	○	○	○	○	
	Load measuring with ±5 percent precision	○	○	○	○	
	FleetManager: access authorisation, shock detection, reports	○	○	○	○	

● Standard ○ Option — Not available

STILL GmbH  
Berzeliusstr. 10  
22113 Hamburg  
Germany  
Tel.: +49 40 73 39 20 00  
Fax: +49 40 73 39 20 01  
info@still.de

**For further information please visit**  
**www.still.eu**



**Gemini Equipment And Rentals Pvt. Ltd.**  
1706-1709, The Corporate Park 17<sup>th</sup> Floor Plot No-14-15  
Vashi Navi Mumbai -400705, India.  
Email id : info@gear-india.com | Contact No: +918451934343 |  
Website: www.gear-india.com

STILL is certified in the following areas: Quality management, occupational safety, environmental protection and energy management.

